

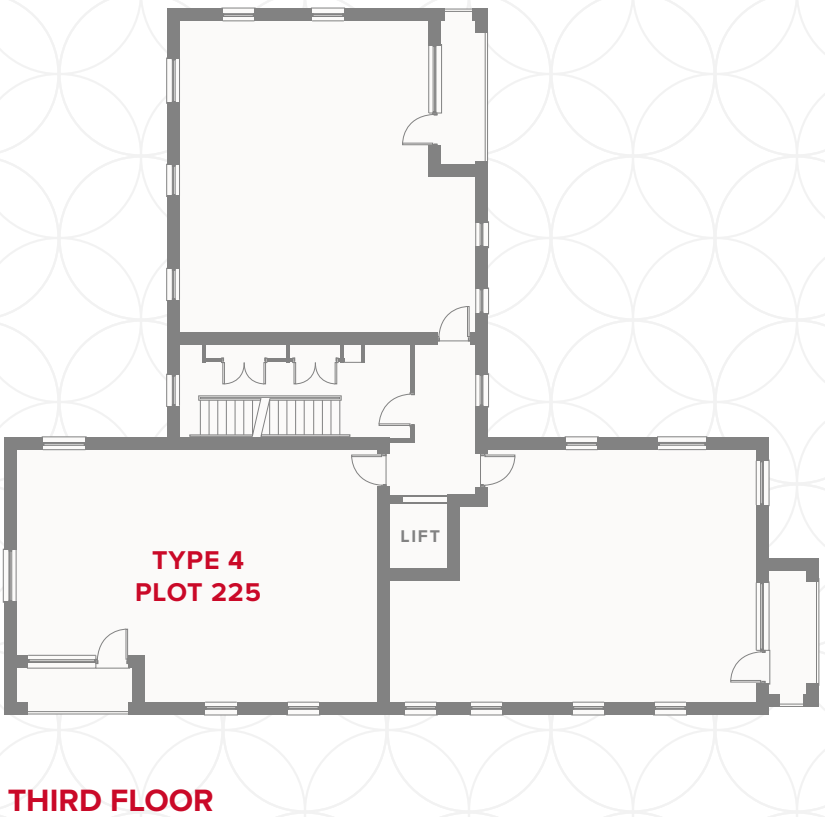
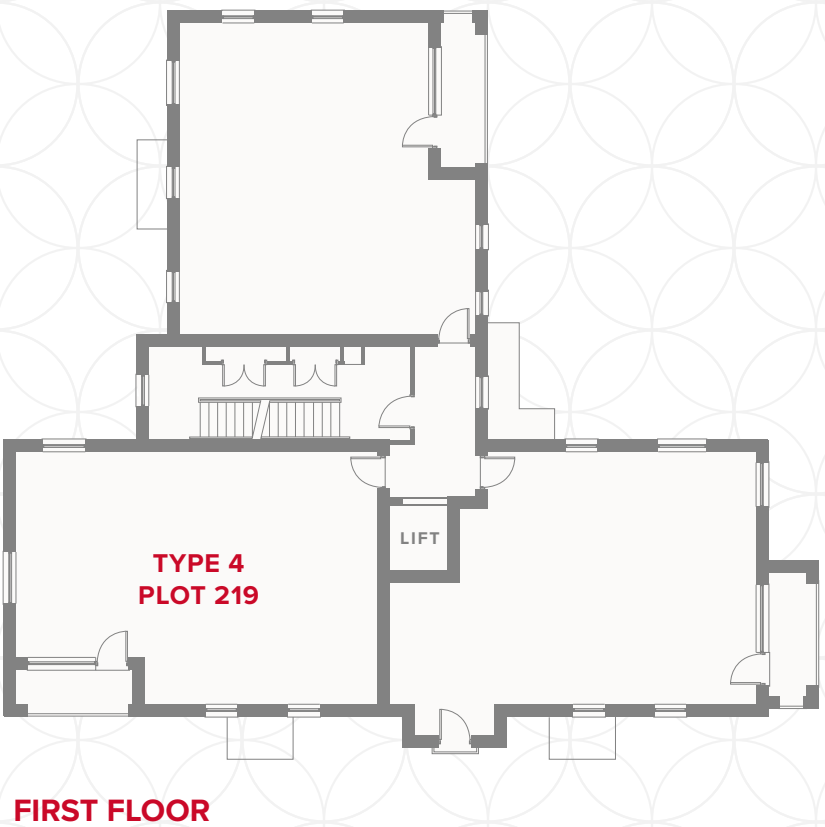
THE AMETHYST

PLOT 219 & 225



STONEHAVEN PARK APARTMENTS

1	Kitchen	15'9" x 6'7"	4.81 x 2.01 m
2	Lounge/Dining	13'3" x 12'10"	4.03 x 3.92 m
3	Bedroom 1	13'4" x 11'4"	4.07 x 3.46 m
4	En-Suite	7'1" x 4'9"	2.16 x 1.45 m
5	Bedroom 2	13'4" x 8'11"	4.07 x 2.72 m
6	Bathroom	7'1" x 6'7"	2.17 x 2.01 m



Customers should note this illustration is an example of the Stonehaven Park Apartments. All dimensions indicated are approximate and the furniture layout is for illustrative purposes only. Detailed plans and specifications are available for inspection for each plot at our Customer Experience Suite during working hours and customers must check their individual specifications prior to making a reservation. Please see Sales Consultant for further details.

▷ Denotes where dimensions are taken from. All wardrobes are subject to site specification. Please see Sales Consultant for further details.

ov/mv - oven & microwave
ff - fridge freezer
dw - dishwasher
wm - washing machine space



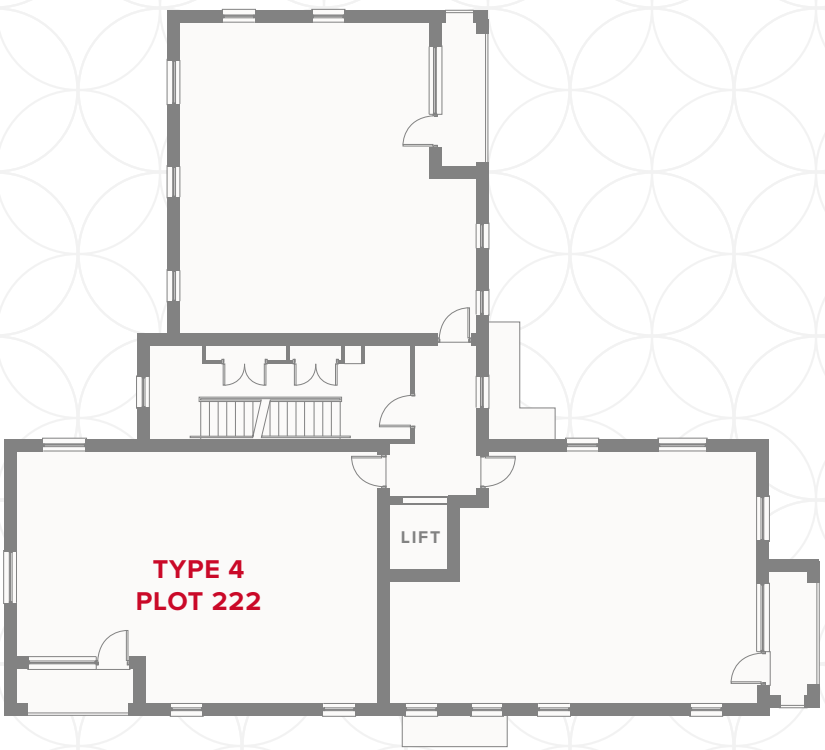
THE AMETHYST

PLOT 222



STONEHAVEN PARK APARTMENTS SECOND FLOOR

1	Kitchen	15'9" x 6'7"	4.81 x 2.01 m
2	Lounge/Dining	13'3" x 12'10"	4.03 x 3.92 m
3	Bedroom 1	13'4" x 11'4"	4.07 x 3.46 m
4	En-Suite	7'1" x 4'9"	2.16 x 1.45 m
5	Bedroom 2	13'4" x 8'11"	4.07 x 2.72 m
6	Bathroom	7'1" x 6'7"	2.17 x 2.01 m



SECOND FLOOR

Customers should note this illustration is an example of the Stonehaven Park Apartments. All dimensions indicated are approximate and the furniture layout is for illustrative purposes only. Detailed plans and specifications are available for inspection for each plot at our Customer Experience Suite during working hours and customers must check their individual specifications prior to making a reservation. Please see Sales Consultant for further details.

▷ Denotes where dimensions are taken from. All wardrobes are subject to site specification. Please see Sales Consultant for further details.

ov/mv - oven & microwave
ff - fridge freezer
dw - dishwasher
wm - washing machine space

