



The Shaftesbury

Four Bedroom Home

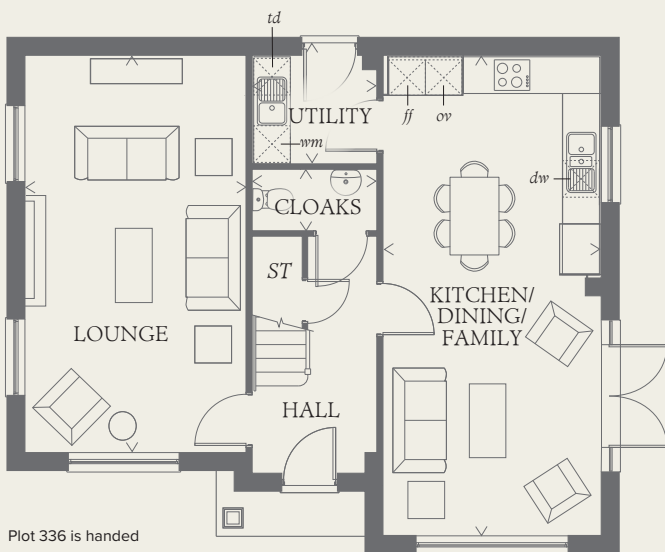




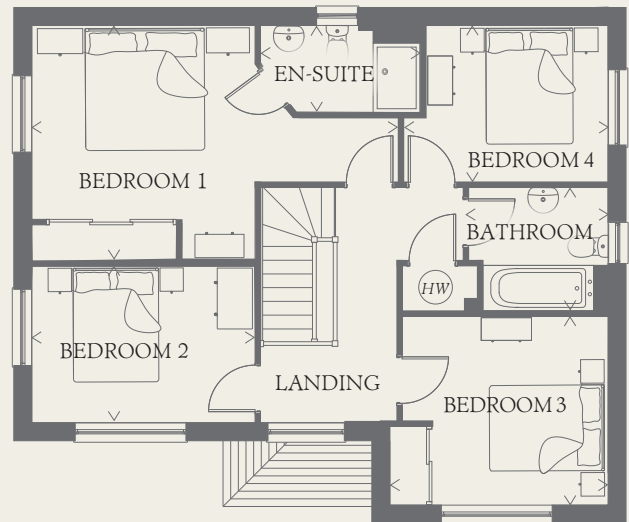
The Shaftesbury

Four Bedroom Home

The Shaftesbury is the epitome of Heritage Collection style, packed with Arts and Crafts architecture on the outside, and full of life and space inside, that's designed around the dynamics of modern family living.



Plot 336 is handed



GROUND FLOOR

LOUNGE	21'2" x 11'8"	6.49 x 3.61 m
KITCHEN/ DINING/ FAMILY	25'7" x 11'6"	7.84 x 3.56 m
UTILITY	6'4" x 5'7"	1.98 x 1.75 m
CLOAKS	6'6" x 3'3"	2.03 x 1.03 m

FIRST FLOOR

BEDROOM 1	12'5" x 12'0"	3.84 x 3.66 m
EN-SUITE	8'5" x 4'0"	2.61 x 1.22 m
BEDROOM 2	11'6" x 10'3"	3.56 x 3.15 m
BEDROOM 3	12'0" x 8'4"	3.66 x 2.59 m
BEDROOM 4	9'8" x 8'2"	3.0 x 2.52 m
BATHROOM	7'3" x 6'6"	2.25 x 2.03 m

CONSUMER CODE FOR HOME BUILDERS

www.consumercode.co.uk

Customers should note this illustration is an example of the Shaftesbury house type. All dimensions indicated are approximate and the furniture layout is for illustrative purposes only. Homes may be 'handed' (mirror image) versions of the illustrations, and may be detached, semi-detached or terraced. Materials used may differ from plot to plot including render and roof tile colours. Detailed plans and specifications are available for inspection for each plot at our Sales Centre during working hours and customers must check their individual specifications prior to making a reservation.

KEY

- Hob
- Oven
- Fridge/freezer
- Washing machine space
- Dishwasher space

- Tumble dryer space
- Hot water cylinder
- Cupboard

< Denotes where dimensions are taken from. All wardrobes are subject to site specification. Please see Sales Consultant for further details.

AF 1247623 EF_SHAFF_DM.8