



TAILORED

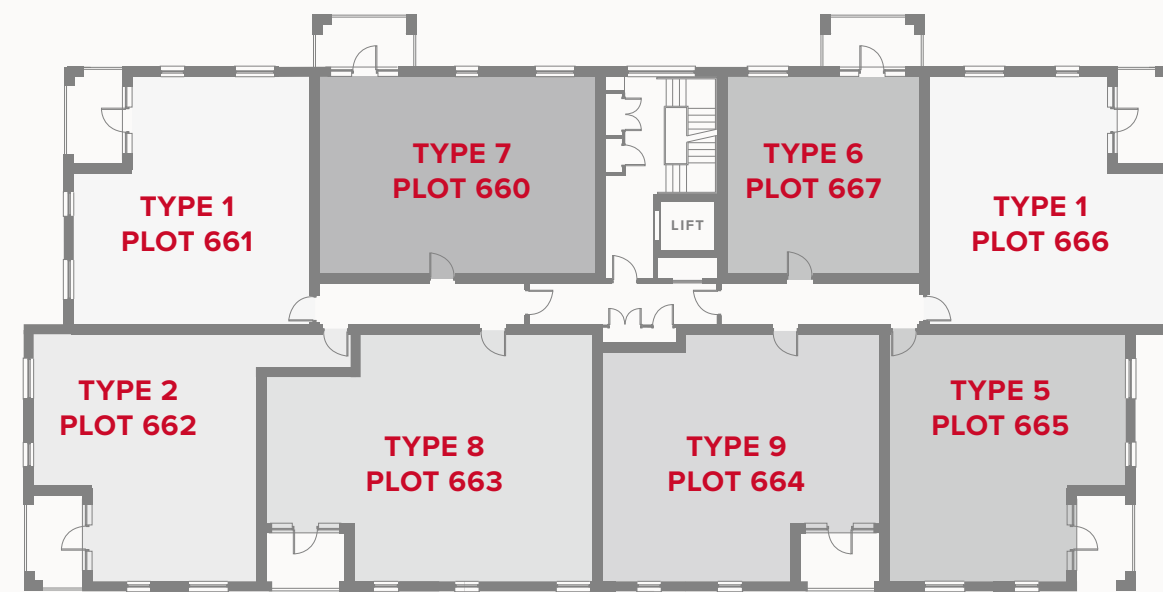
- REDROW -

PLAZA CENTRAL WESTGATE HOUSE

ONE & TWO BEDROOM APARTMENTS



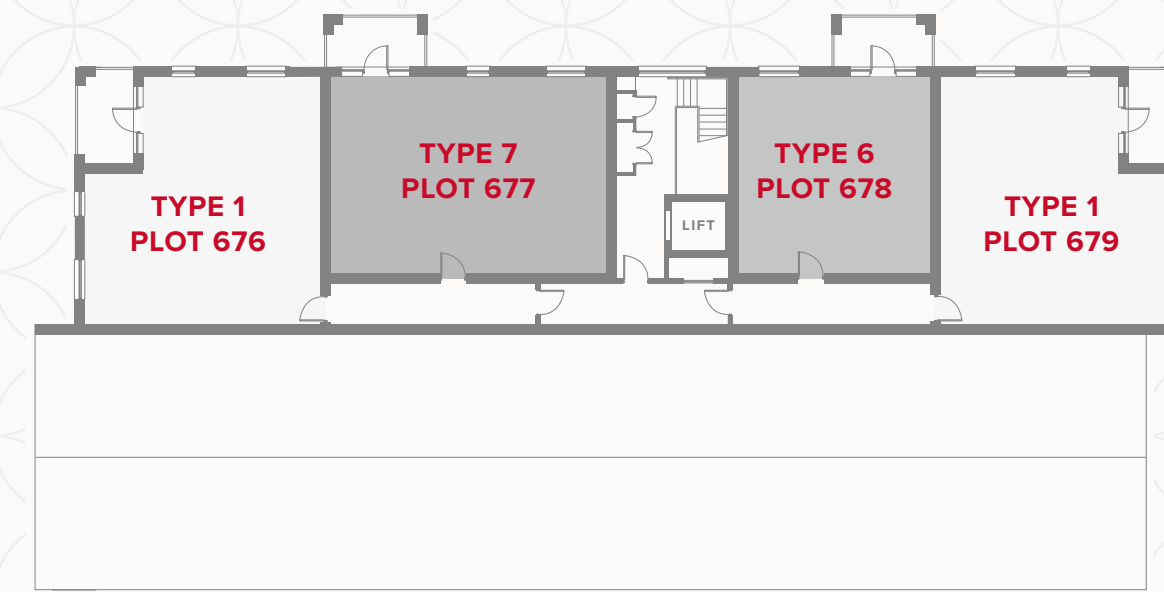
FIRST FLOOR



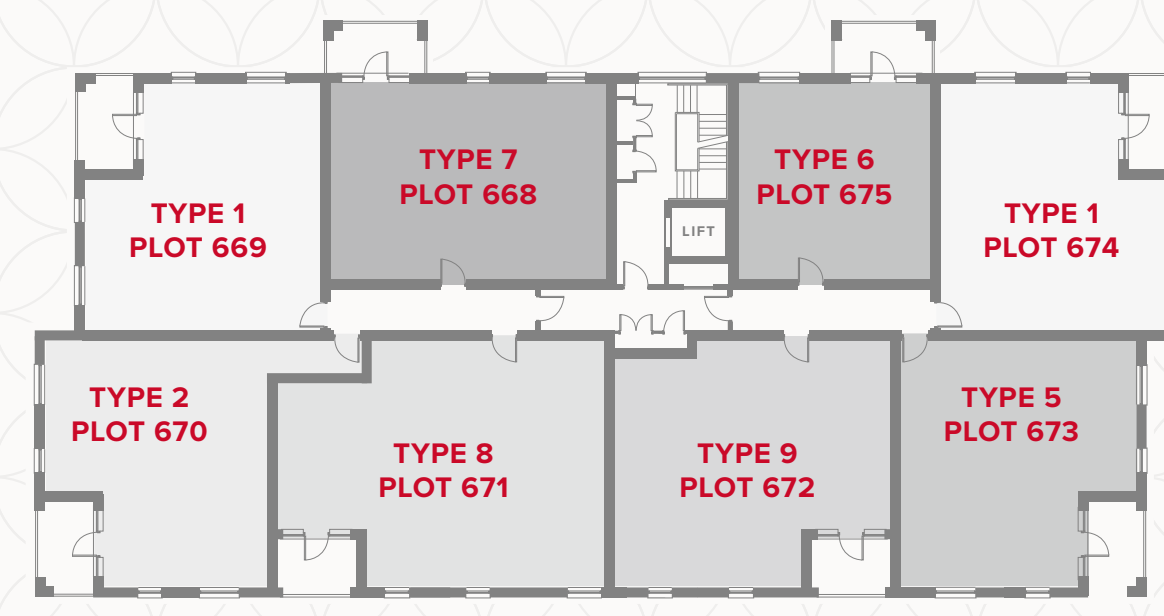
GROUND FLOOR



THIRD FLOOR

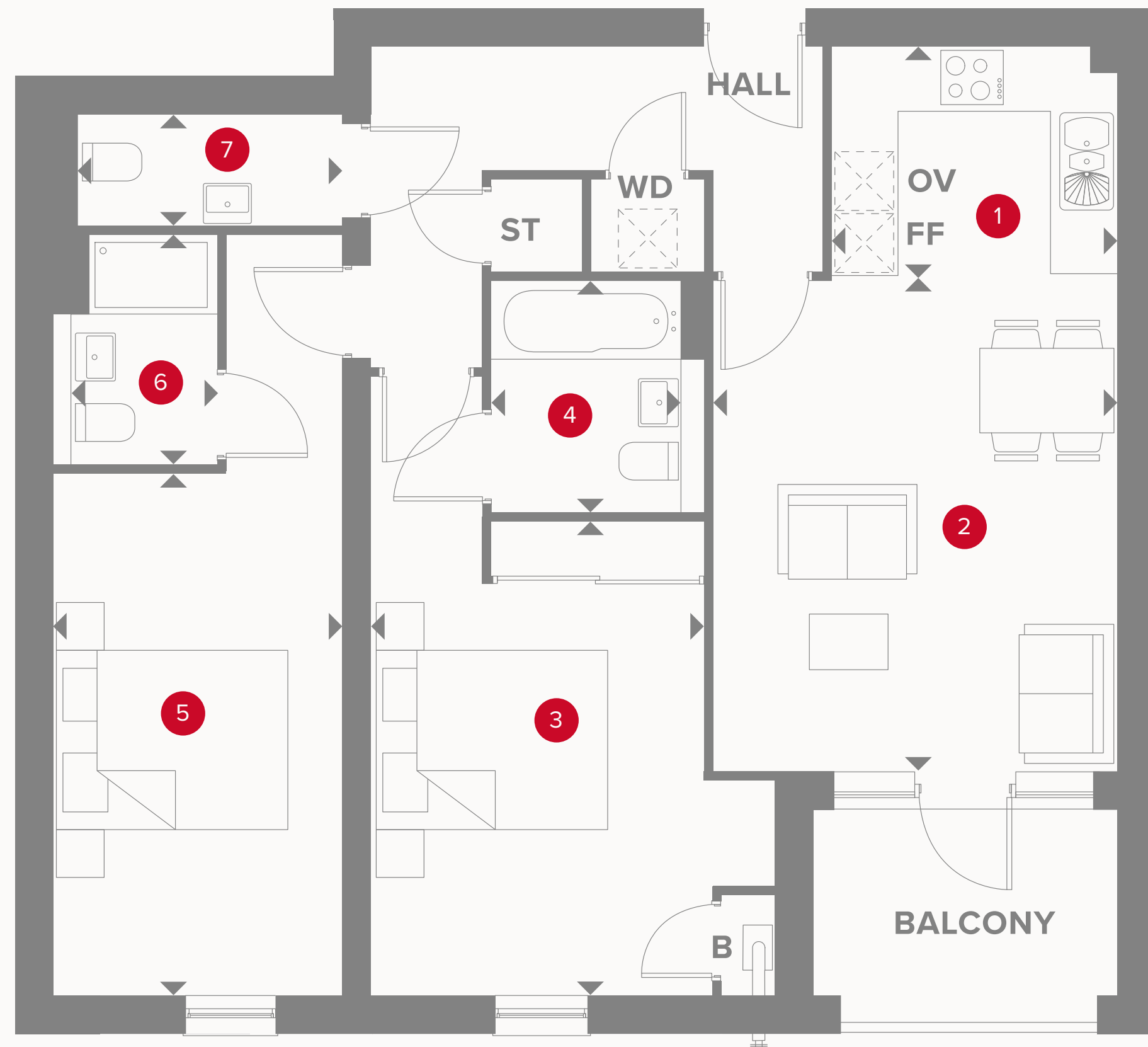


SECOND FLOOR



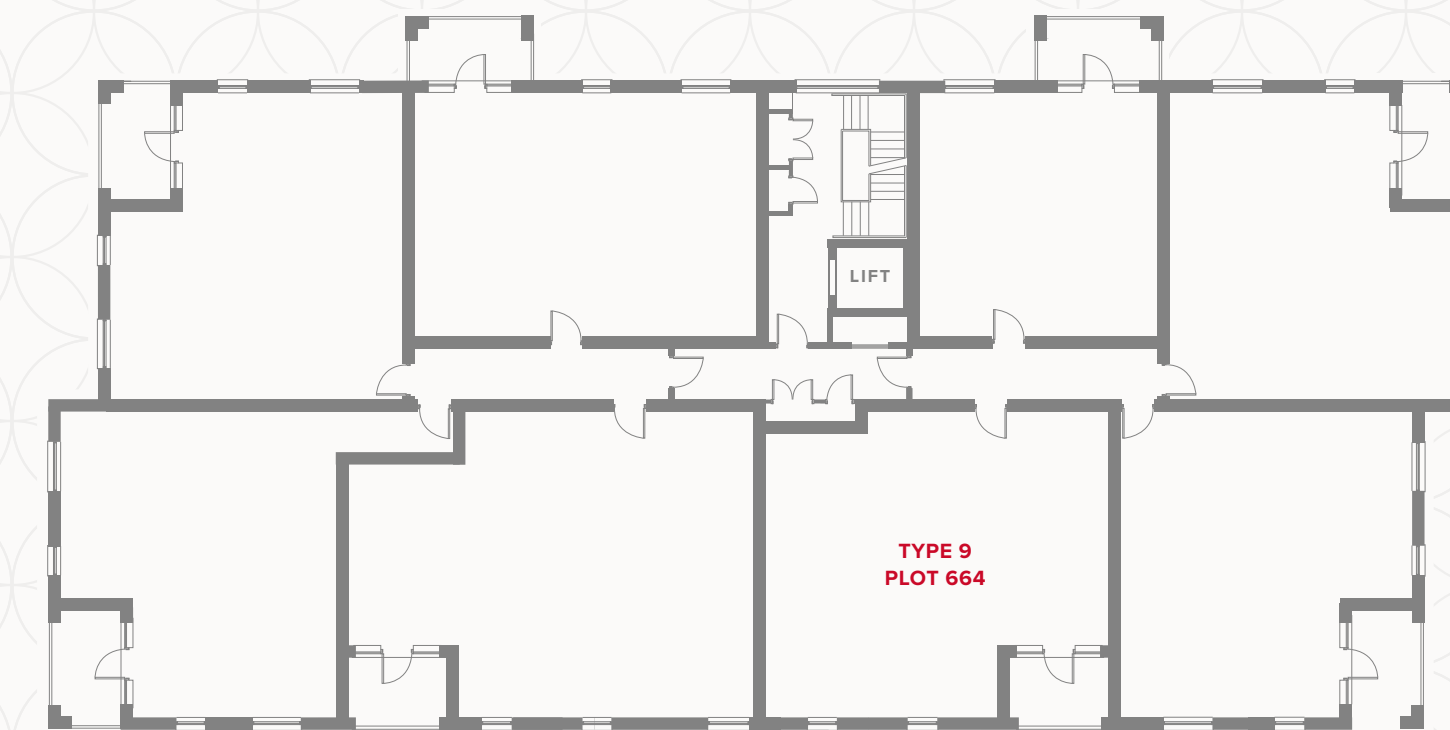
APARTMENT TYPE 9

PLOT 664



PLAZA CENTRAL WESTGATE HOUSE FIRST FLOOR

| | | | |
|---|---------------|----------------|---------------|
| 1 | Kitchen | 8'11" x 7'1" | 2.71 x 2.15 m |
| 2 | Lounge/Dining | 15'5" x 12'7" | 4.7 x 3.83 m |
| 3 | Bedroom 1 | 14'10" x 10'4" | 4.51 x 3.15 m |
| 4 | En-Suite 1 | 7'2" x 5'11" | 2.18 x 1.8 m |
| 5 | Bedroom 2 | 16'3" x 9' | 4.95 x 2.75 m |
| 6 | En-Suite 2 | 7'2" x 4'6" | 2.18 x 1.36 m |
| 7 | Cloakroom | 8'3" x 3'6" | 2.5 x 1.06 m |



KEY

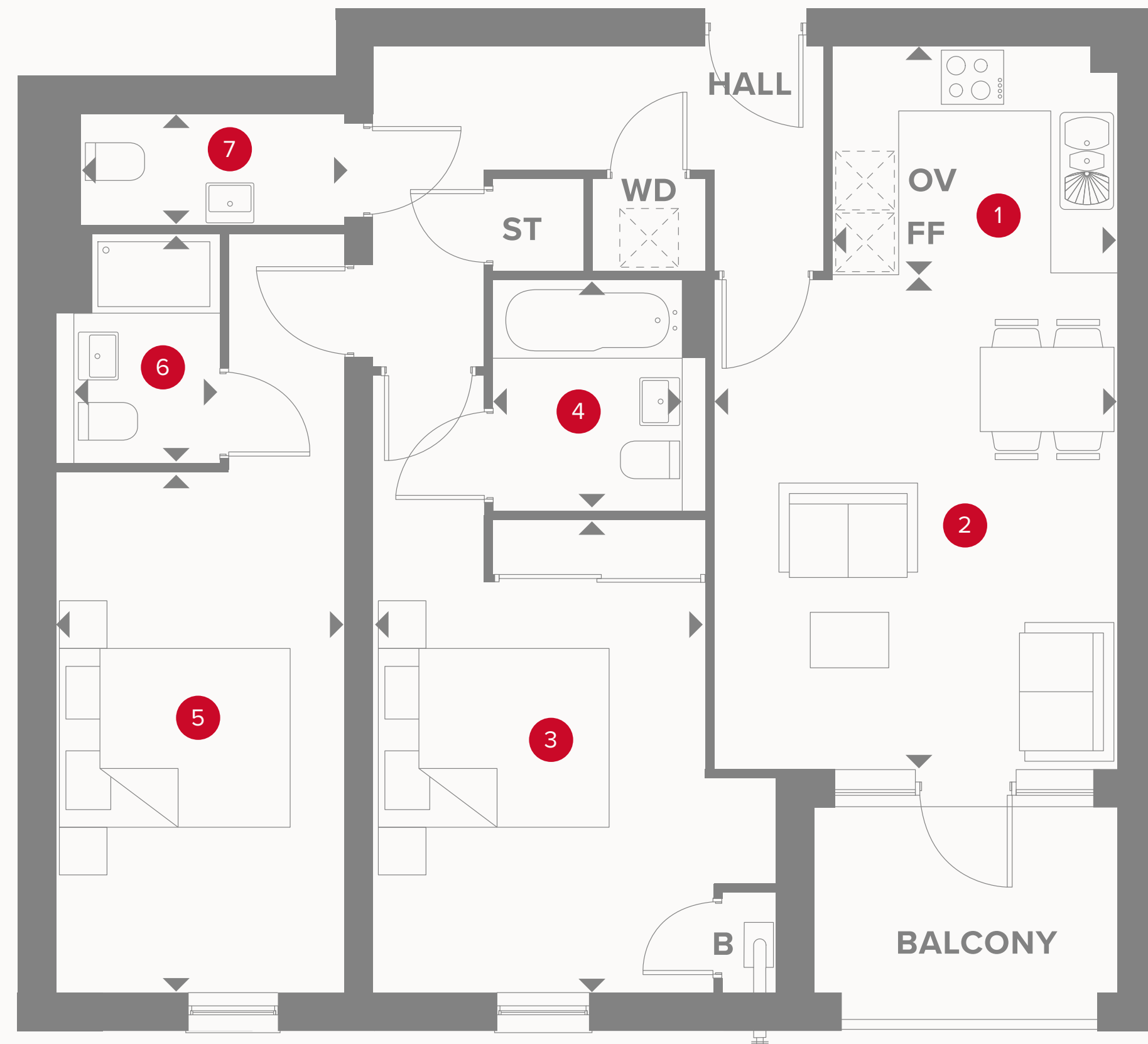
| | | | |
|---|----------------|---|------------------|
|  | Hob |  | Dimensions start |
| OV | Oven | ST | Storage cupboard |
| FF | Fridge/freezer | WD | Washer/Dryer |
| B | Boiler | | |

Customers should note this illustration is an example of the Plaza Central Westgate House apartments. All dimensions indicated are approximate and the furniture layout is for illustrative purposes only. Materials used may differ from plot to plot including render and roof tile colours. Detailed plans and specifications are available for inspection for each plot at our Sales Centre during working hours and customers must check their individual specifications prior to making a reservation. Please see Sales Consultant for further details.

**CONSUMER
CODE FOR
HOME BUILDERS**
www.consumercode.co.uk

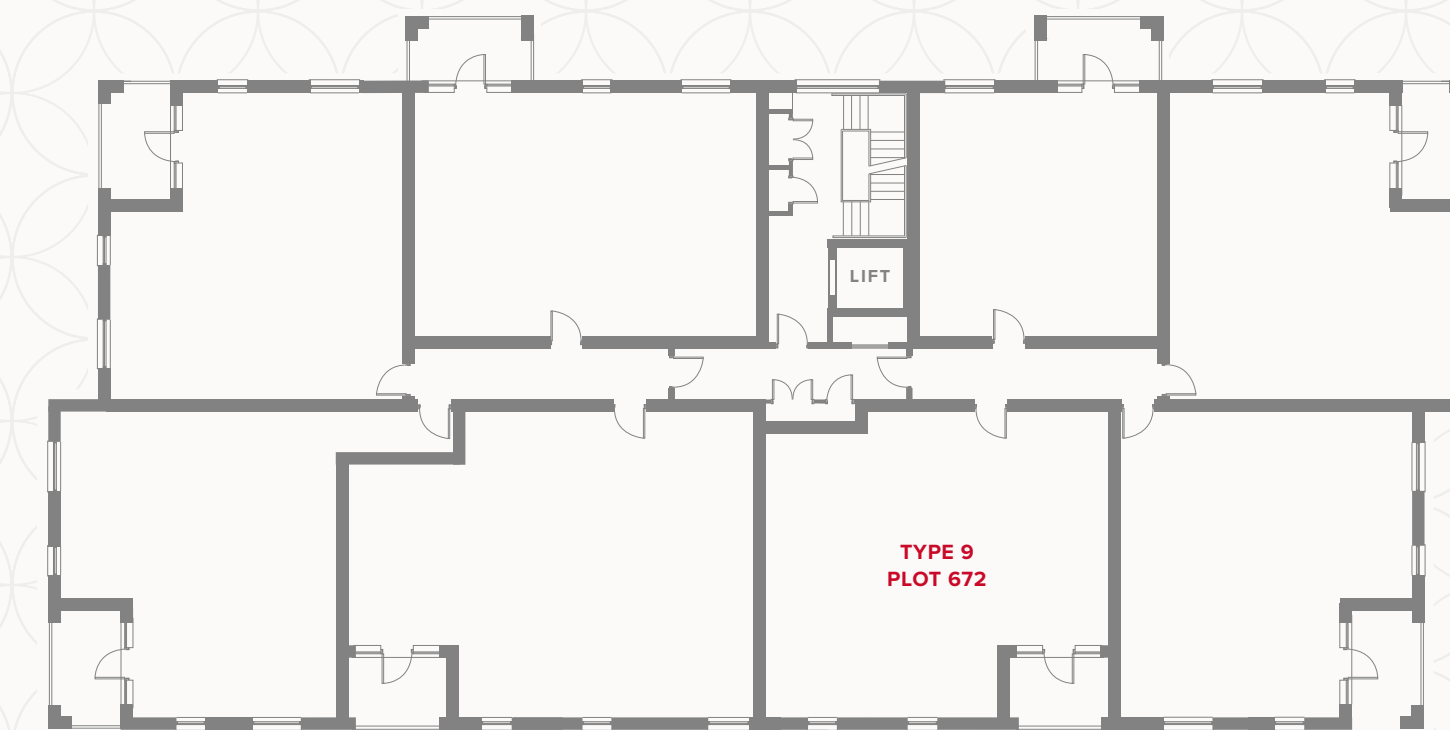
APARTMENT TYPE 9

PLOT 672



PLAZA CENTRAL WESTGATE HOUSE SECOND FLOOR

| | | | |
|---|---------------|----------------|---------------|
| 1 | Kitchen | 8'11" x 7'1" | 2.71 x 2.15 m |
| 2 | Lounge/Dining | 15'5" x 12'7" | 4.7 x 3.83 m |
| 3 | Bedroom 1 | 14'10" x 10'4" | 4.51 x 3.15 m |
| 4 | En-Suite 1 | 7'2" x 5'11" | 2.18 x 1.8 m |
| 5 | Bedroom 2 | 16'3" x 9' | 4.95 x 2.75 m |
| 6 | En-Suite 2 | 7'2" x 4'6" | 2.18 x 1.36 m |
| 7 | Cloakroom | 8'3" x 3'6" | 2.5 x 1.06 m |



KEY

- Hob
- OV** Oven
- FF** Fridge/freezer
- B** Boiler

- Dimensions start
- ST** Storage cupboard
- WD** Washer/Dryer

Customers should note this illustration is an example of the Plaza Central Westgate House apartments. All dimensions indicated are approximate and the furniture layout is for illustrative purposes only. Materials used may differ from plot to plot including render and roof tile colours. Detailed plans and specifications are available for inspection for each plot at our Sales Centre during working hours and customers must check their individual specifications prior to making a reservation. Please see Sales Consultant for further details.