



The Richmond

Four Bedroom Home





The Richmond

Four Bedroom Home

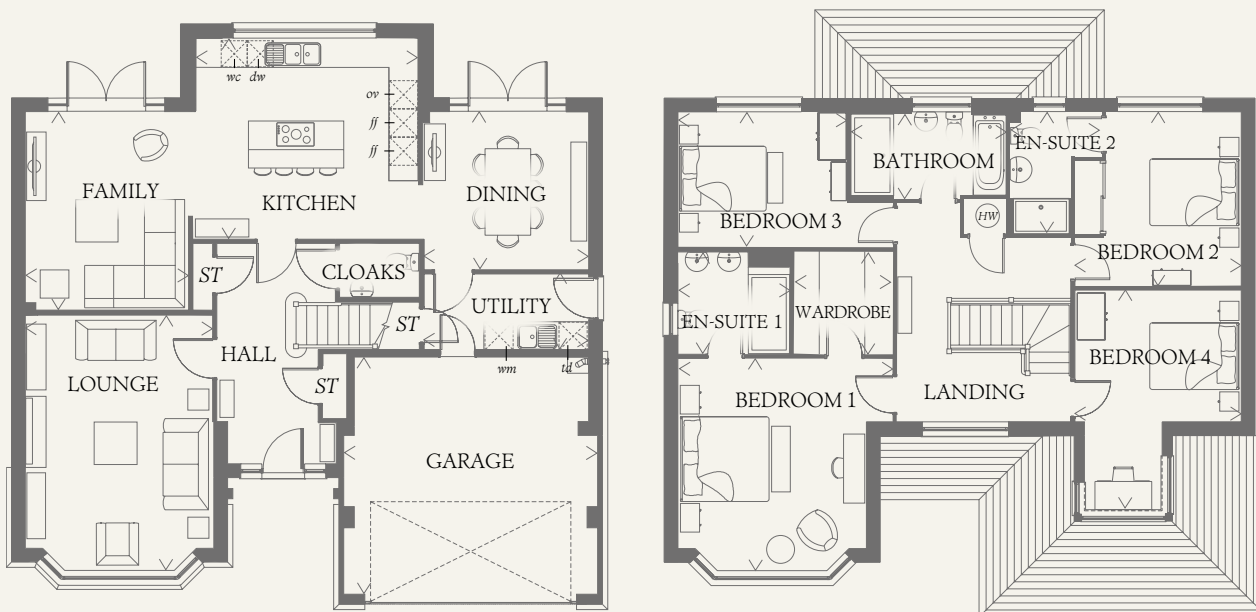




The Richmond

Four Bedroom Home

Blending timeless Arts and Crafts touches with the finest of modern family living that sets the kitchen in its natural place at the heart of the home. The Richmond offers a rewarding quality of life that surpass the very highest standards.



GROUND FLOOR

LOUNGE	17'8" x 13'0"	5.38 x 3.97 m
FAMILY	13'9" x 11'4"	4.20 x 3.45 m
KITCHEN	15'7" x 14'0"	4.76 x 4.27 m
DINING	11'4" x 11'0"	3.46 x 3.35 m
UTILITY	11'4" x 5'4"	3.46 x 1.62 m
CLOAKS	5'5" x 3'7"	1.67 x 1.12 m
GARAGE	17'9" x 16'6"	5.41 x 5.04 m

FIRST FLOOR

BEDROOM 1	14'8" x 15'0"	4.49 x 4.56 m
EN-SUITE 1	7'10" x 7'1"	2.40 x 2.17 m
WARDROBE	7'1" x 6'10"	2.17 x 2.08 m
BEDROOM 2	12'2" x 11'7"	3.70 x 3.52 m
EN-SUITE 2	8'6" x 5'10"	2.58 x 1.90 m
BEDROOM 3	11'9" x 9'5"	3.57 x 2.86 m
BEDROOM 4	15'6" x 11'7"	4.73 x 3.52 m
BATHROOM	10'10" x 5'10"	3.29 x 1.78 m

Details relate only to plots: 114, 117, 156, 160, 310, 311.

**CONSUMER
CODE FOR
HOME BUILDERS**

www.consumercode.co.uk

Customers should note this illustration is an example of the Richmond house type. All dimensions indicated are approximate and the furniture layout is for illustrative purposes only. Homes may be 'handed' (mirror image) versions of the illustrations, and may be detached, semi-detached or terraced. Materials used may differ from plot to plot including render and roof tile colours. Detailed plans and specifications are available for inspection for each plot at our Sales Centre during working hours and customers must check their individual specifications prior to making a reservation.

KEY

Hob	Tumble dryer space
Oven	Hot water cylinder
Fridge/freezer	Cupboard
Washing machine space	
Dishwasher space	

< Denotes where dimensions are taken from. All wardrobes are subject to site specification. Please see Sales Consultant for further details.

THINK. EF_RICH_DM.6 | AF 129287