



The Welwyn

Four Bedroom Home

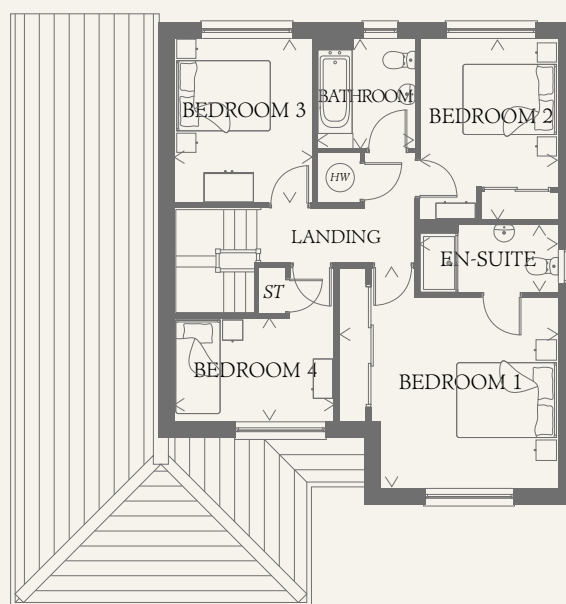
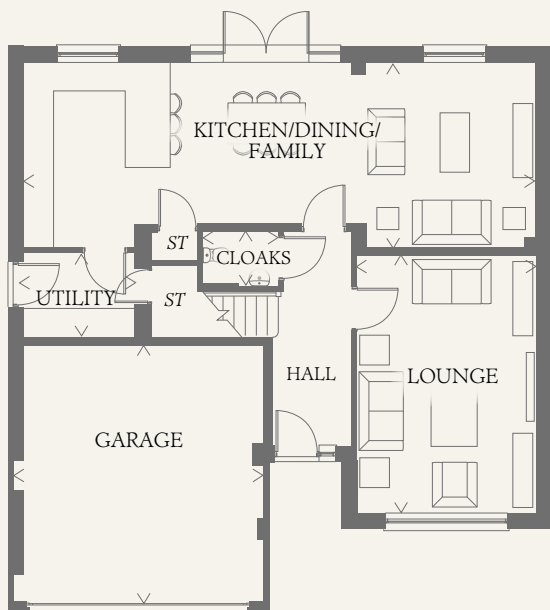




The Welwyn

Four Bedroom Home

With a generous kitchen, dining and family area, a perfect centrality for family gatherings and a separate, spacious lounge for when you need a little peace and quiet, the Welwyn is a home designed to accommodate the flow of family life.



GROUND FLOOR

LOUNGE	17'1" x 11'11"	5.21 x 3.63 m
KITCHEN	12'5" x 9'9"	3.79 x 2.97 m
DINING	13'0" x 10'10"	3.95 x 3.29 m
FAMILY	12'5" x 11'4"	3.78 x 3.46 m
UTILITY	7'4" x 5'7"	2.24 x 1.71 m
CLOAKS	5'1" x 3'8"	1.56 x 1.12 m
GARAGE	17'2" x 16'0"	5.23 x 4.88 m

FIRST FLOOR

BEDROOM 1	14'9" x 14'6"	4.49 x 4.43 m
EN-SUITE	9'3" x 4'6"	2.82 x 1.38 m
BEDROOM 2	12'2" x 9'3"	3.70 x 2.82 m
BEDROOM 3	11'0" x 9'3"	3.35 x 2.81 m
BEDROOM 4	10'6" x 6'1"	3.40 x 2.11 m
BATHROOM	7'4" x 6'6"	2.24 x 1.99 m

PLOTS 10, 20, 62, 66, 68, 71, 76, 272, 308 AND 317 ARE HANDED

**CONSUMER
CODE FOR
HOME BUILDERS**

www.consumercode.co.uk

Customers should note this illustration is an example of the Welwyn house type. All dimensions indicated are approximate and the furniture layout is for illustrative purposes only. Homes may be 'handed' (mirror image) versions of the illustrations, and may be detached, semi-detached or terraced. Materials used may differ from plot to plot including render and roof tile colours. Detailed plans and specifications are available for inspection for each plot at our Sales Centre during working hours and customers must check their individual specifications prior to making a reservation.

KEY
 (HW) Hot water cylinder
 ST Cupboard

< Denotes where dimensions are taken from. All wardrobes are subject to site specification. Please see Sales Consultant for further details.

THINK 205134. EF_WELW_DM.7 RV