

Chestnut

Four bedroom home



Where you
want to be


Harwood
Homes

Chestnut

Four bedroom home



Where you
want to be


Harwood
Homes

Chestnut

Four bedroom home

The Chestnut is a delightful 4 bedroom home, offering carefully crafted spaces suited to every member of the family. To the ground floor you'll find a lounge, garage and open-plan kitchen/dining area, with an en suite master bedroom, family bathroom and three further bedrooms to the first floor.

Ground floor

Lounge	15'9" x 10'6"	4.81 x 3.21 m
Kitchen/ Dining	17'7" x 9'6"	5.35 x 2.89 m
Utility	6'3" x 6'1"	1.90 x 1.86 m
Cloaks	6'3" x 3'1"	1.90 x 0.95 m
Garage	19'5" x 9'10"	5.91 x 3.00 m

First floor

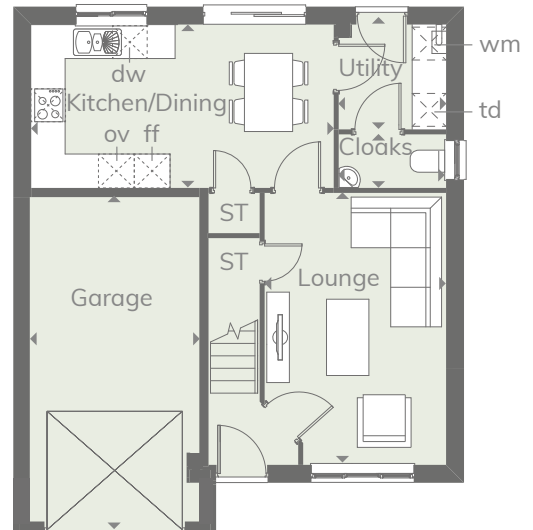
Bedroom 1	12'11" x 10'6"	3.94 x 3.21 m
En-suite	5'8" x 5'8"	1.73 x 1.73 m
Bedroom 2	12'11" x 9'1"	3.94 x 2.76 m
Bedroom 3	12'4" x 8'3"	3.77 x 2.51 m
Bedroom 4	12'4" x 10'0"	3.77 x 3.05 m
Bathroom	8'11" x 6'2"	2.71 x 1.89 m

Customers should note this illustration is an example of the Chestnut house type. All dimensions indicated are approximate and the furniture layout is for illustrative purposes only. Homes may be 'handed' (mirror image) versions of the illustrations, and may be detached, semi-detached or terraced. Materials used may differ from plot to plot including render and roof tile colours. Detailed plans and specifications are available for inspection for each plot at our Sales Centre during working hours and customers must check their individual specifications prior to making a reservation.

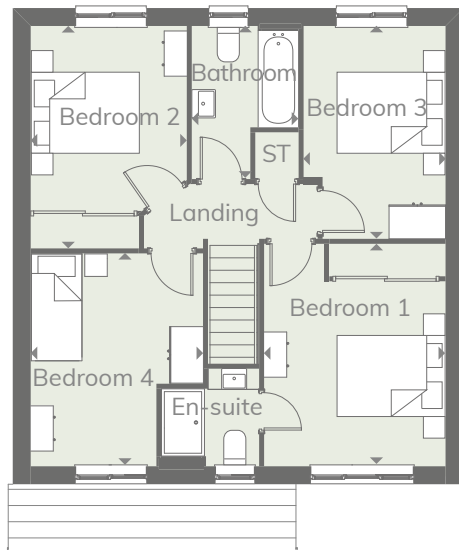
KEY

 Hob	wm Washing machine space
ov Oven	td Tumble dryer space
ff Fridge/freezer	ST Cupboard
dw Dishwasher	

Ground floor



First floor



**CONSUMER
CODE FOR
HOME BUILDERS**

www.consumercode.co.uk

◀ Denotes where dimensions are taken from. All wardrobes are subject to site specification. Please see Sales Consultant for further details.

THINK 199764_EF_CHES_DM.1 RV

Discover where you want to be and visit
harwoodhomes.co.uk


**Harwood
Homes**