

Rowan

Four bedroom home



Where you
want to be



Harwood
Homes

Rowan

Four bedroom home



Where you
want to be



Harwood
Homes

Rowan

Four bedroom home

The Rowan is a deceptively spacious 4 bedroom home, expertly designed with a focus on convenience and flexibility. You'll benefit from an open-plan kitchen/dining area and lounge to the ground floor, with four bedrooms (en suite to the master) and family bathroom to the first floor.

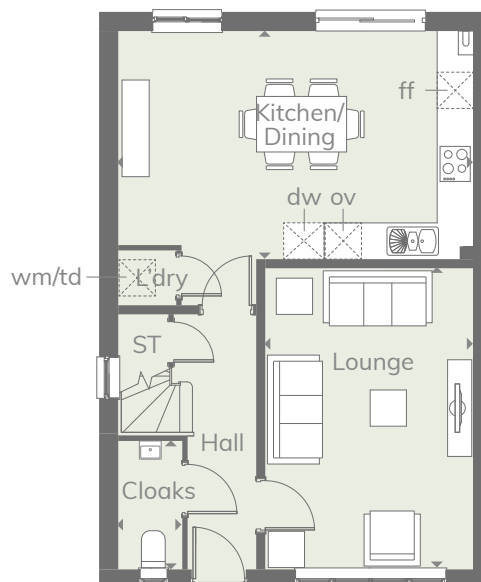
Ground floor

Lounge	16'7" x 11'1"	5.06 x 3.38 m
Kitchen/ Dining	19'3" x 12'2"	5.88 x 3.71 m
Cloaks	7'0" x 3'6"	2.13 x 1.06 m

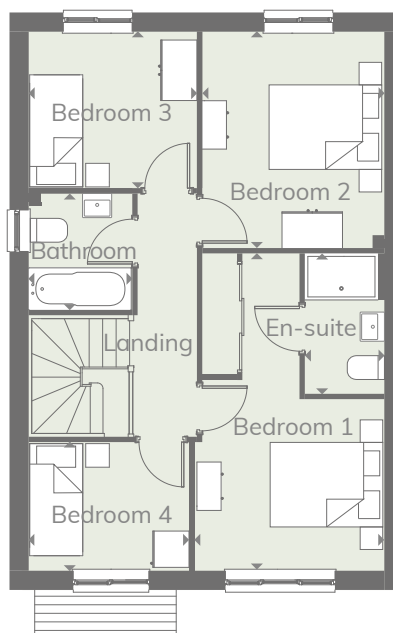
First floor

Bedroom 1	17'5" x 10'4"	5.32 x 3.14 m
En-suite	6'11" x 4'4"	2.12 x 1.31 m
Bedroom 2	11'5" x 9'11"	3.48 x 3.01 m
Bedroom 3	9'1" x 8'2"	2.78 x 2.50 m
Bedroom 4	8'8" x 7'3"	2.65 x 2.22 m
Bathroom	6'4" x 5'7"	1.92 x 1.70 m

Ground floor



First floor



Customers should note this illustration is an example of the Rowan house type. All dimensions indicated are approximate and the furniture layout is for illustrative purposes only. Homes may be 'handed' (mirror image) versions of the illustrations, and may be detached, semi-detached or terraced. Materials used may differ from plot to plot including render and roof tile colours. Detailed plans and specifications are available for inspection for each plot at our Sales Centre during working hours and customers must check their individual specifications prior to making a reservation.

KEY

	Hob	td	Tumble dryer space
	Oven	ST	Cupboard
	Fridge/freezer	wm	Washing machine space
	Dishwasher		

◀ Denotes where dimensions are taken from. All wardrobes are subject to site specification. Please see Sales Consultant for further details.

**CONSUMER
CODE FOR
HOME BUILDERS**

www.consumercode.co.uk

THINK 199764_EF_ROWAN_DM.1 RV

Discover where you want to be and visit
harwoodhomes.co.uk

**Harwood
Homes**