



# The Blenheim

*Five Bedroom Home*





# The Blenheim

*Five Bedroom Home*

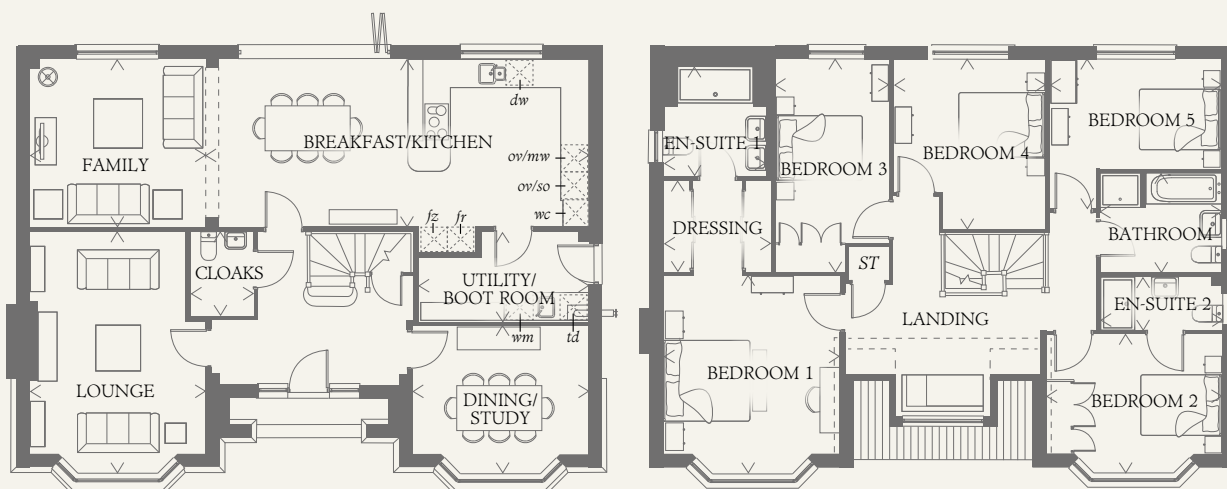




# The Blenheim

## Five Bedroom Home

From its magnificent feature bay windows, to its luxurious interior touches, the Blenheim is the epitome of excellence in executive family living. Providing the space and specifications to ensure you and your family enjoy first class style and comfort.



### GROUND FLOOR

LOUNGE	17'11" x 13'0"	5.47 x 3.97 m
BREAKFAST/ KITCHEN	28'5" x 12'4"	8.66 x 3.76 m
FAMILY	13'0" x 12'4"	3.97 x 3.76 m
DINING/ STUDY	13'0" x 11'0"	3.97 x 3.36 m
UTILITY/ BOOT ROOM	12'7" x 6'8"	3.83 x 2.03 m
CLOAKS	6'2" x 4'7"	1.88 x 1.40 m

### FIRST FLOOR

BEDROOM 1	14'10" x 13'0"	4.51 x 3.97 m
DRESSING	8'0" x 6'9"	2.43 x 2.06 m
EN-SUITE 1	8'2" x 7'6"	2.49 x 2.29 m
BEDROOM 2	13'0" x 10'5"	3.97 x 3.17 m
EN-SUITE 2	8'11" x 3'11"	2.73 x 1.19 m
BEDROOM 3	15'9" x 8'6"	4.79 x 2.58 m
BEDROOM 4	12'7" x 11'4"	3.83 x 3.45 m
BEDROOM 5	12'9" x 8'2"	3.89 x 2.48 m
BATHROOM	8'11" x 7'3"	2.73 x 2.21 m

#### CONSUMER CODE FOR HOME BUILDERS

[www.consumercode.co.uk](http://www.consumercode.co.uk)

Customers should note this illustration is an example of the Blenheim house type. All dimensions indicated are approximate and the furniture layout is for illustrative purposes only. Homes may be 'handed' (mirror image) versions of the illustrations, and may be detached, semi-detached or terraced. Materials used may differ from plot to plot including render and roof tile colours. Detailed plans and specifications are available for inspection for each plot at our Sales Centre during working hours and customers must check their individual specifications prior to making a reservation.

#### KEY

Hob	<i>fr</i> Fridge
<i>ov</i> Oven	<i>so</i> Steam oven
<i>wm</i> Washing machine	<i>mw</i> Microwave
<i>dw</i> Dishwasher	<i>fz</i> Freezer
<i>td</i> Tumble dryer	<i>ST</i> Cupboard
<i>wc</i> Wine cooler	

Redrow.co.uk give notice that the property particulars and related information on this site, whilst believed to be accurate, are set as a general outline for guidance only. Intending purchasers should not rely on them as statements or representations of fact, but must satisfy themselves before physical inspection as to their availability, or by physical inspection of the property in question or otherwise as to their accuracy or fit for purpose. Consequently, no information displayed on this site (or linked sites) constitutes or forms part of a contract. Materials used may differ from plot to plot including render and roof tile colours.

< Denotes where dimensions are taken from. All wardrobes are subject to site specification. Please see Sales Consultant for further details.

THINK 198595. EF\_BLEN\_LTH\_DM.1.0 RV