



The Stratford

Four Bedroom Home





The Stratford

Four Bedroom Home

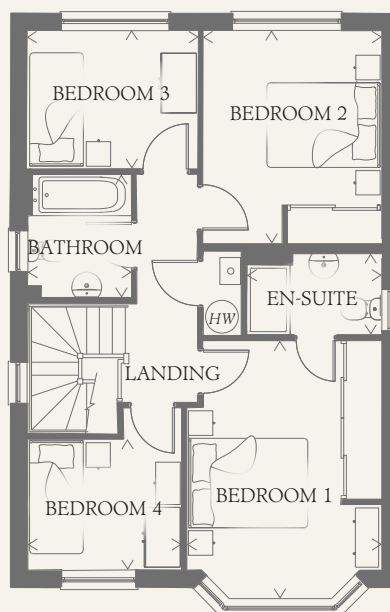
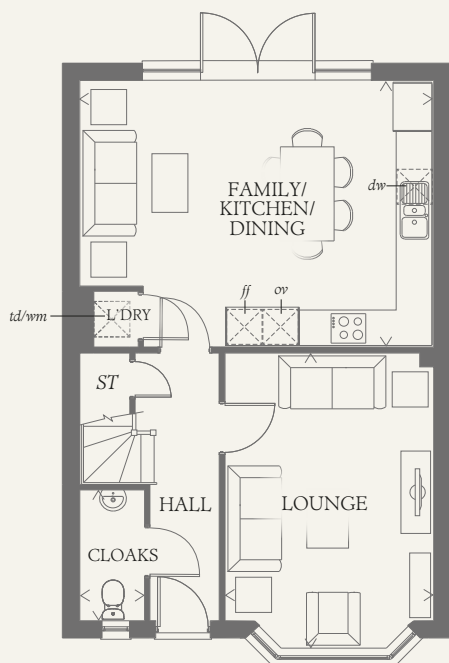




The Stratford

Four Bedroom Home

Behind a frontage inspired by the Arts and Crafts movement, the Stratford provides the perfect setting for family life. The generous open plan kitchen/dining area is sure to be the hub of the home whilst the first floor offers four pleasingly sized bedrooms.



GROUND FLOOR

LOUNGE	16'4" x 11'6"	4.97 x 3.51 m
FAMILY/ KITCHEN/ DINING	19'8" x 14'9"	5.99 x 4.49 m
LAUNDRY	3'1" x 2'5"	0.93 x 0.74 m
CLOAKS	7'3" x 3'6"	2.20 x 1.06 m

FIRST FLOOR

BEDROOM 1	14'3" x 10'10"	4.35 x 3.30 m
EN-SUITE	7'6" x 4'7"	2.28 x 1.39 m
BEDROOM 2	11'11" x 9'11"	3.62 x 3.02 m
BEDROOM 3	9'5" x 7'8"	2.88 x 2.34 m
BEDROOM 4	8'6" x 7'3"	2.60 x 2.20 m
BATHROOM	6'11" x 5'9"	2.10 x 1.76 m

CONSUMER CODE FOR HOME BUILDERS

www.consumercode.co.uk

Customers should note this illustration is an example of the Stratford house type. All dimensions indicated are approximate and the furniture layout is for illustrative purposes only. Homes may be 'handed' (mirror image) versions of the illustrations, and may be detached, semi-detached or terraced. Materials used may differ from plot to plot including render and roof tile colours. Detailed plans and specifications are available for inspection for each plot at our Sales Centre during working hours and customers must check their individual specifications prior to making a reservation.

KEY

Hob	<i>td</i> Tumble dryer space
<i>ov</i> Oven	Hot water cylinder
<i>ff</i> Fridge/freezer	<i>ST</i> Cupboard
<i>wm</i> Washing machine space	
<i>dw</i> Dishwasher space	

< Denotes where dimensions are taken from. All wardrobes are subject to site specification. Please see Sales Consultant for further details.

THINK 204200. EF_STRATFORD_DM.5 RV