



The Canterbury

Four Bedroom Home

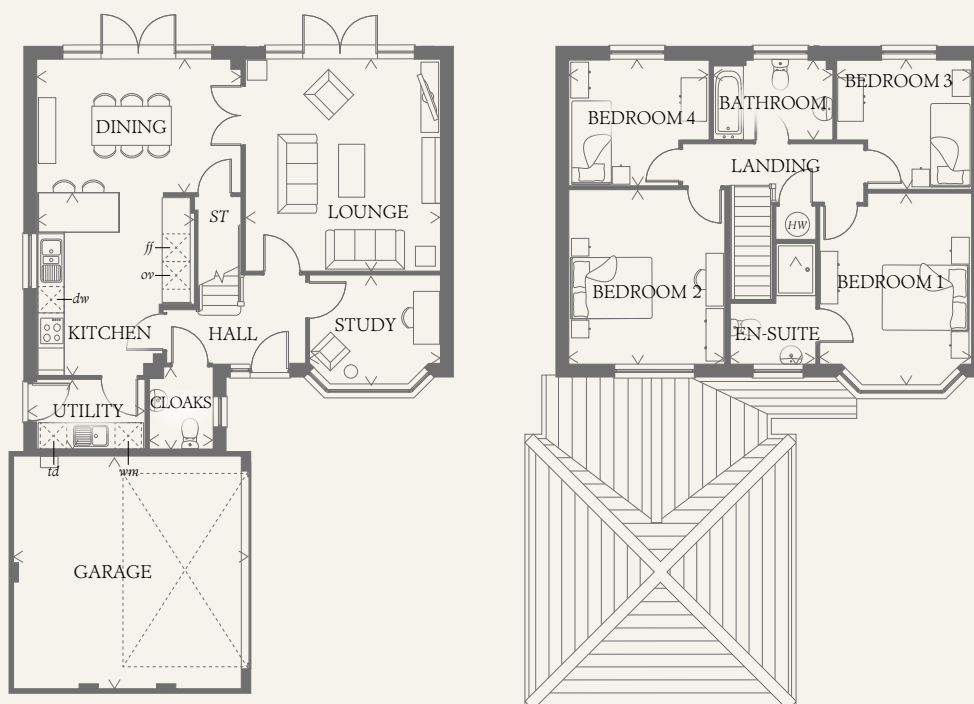




The Canterbury

Four Bedroom Home

Externally inspired by tradition, the feature bay windows and two sets of French doors flood the Canterbury with a feeling of light and space, extending this magnificent home out into the garden beyond.



GROUND FLOOR

LOUNGE	15'9" x 14'5"	4.80 x 4.40 m
KITCHEN	13'4" x 11'8"	4.07 x 3.56 m
DINING	15'1" x 9'11"	4.60 x 3.01 m
STUDY	9'8" x 8'1"	2.95 x 2.47 m
UTILITY	7'11" x 5'2"	2.41 x 1.58 m
CLOAKS	6'2" x 4'7"	1.87 x 1.40 m
GARAGE	17'7" x 17'5"	5.35 x 5.30 m

FIRST FLOOR

BEDROOM 1	14'2" x 11'4"	4.31 x 3.45 m
EN-SUITE	8'11" x 6'5"	2.73 x 1.95 m
BEDROOM 2	13'0" x 11'7"	3.95 x 3.54 m
BEDROOM 3	10'1" x 9'8"	3.07 x 2.94 m
BEDROOM 4	10'4" x 9'5"	3.14 x 2.86 m
BATHROOM	8'11" x 5'11"	2.73 x 1.81 m

CONSUMER CODE FOR HOME BUILDERS

www.consumercode.co.uk

Customers should note this illustration is an example of the Canterbury house type. All dimensions indicated are approximate and the furniture layout is for illustrative purposes only. Homes may be 'handed' (mirror image) versions of the illustrations, and may be detached, semi-detached or terraced. Materials used may differ from plot to plot including render and roof tile colours. Detailed plans and specifications are available for inspection for each plot at our Sales Centre during working hours and customers must check their individual specifications prior to making a reservation.

KEY

Hob	<i>td</i> Tumble dryer space
<i>ov</i> Oven	Hot water cylinder
<i>ff</i> Fridge/freezer	<i>ST</i> Cupboard
<i>wm</i> Washing machine space	
<i>dw</i> Dishwasher space	

< Denotes where dimensions are taken from. All wardrobes are subject to site specification. Please see Sales Consultant for further details.

THINK 204677. EF_CANT_DM.7 RV

