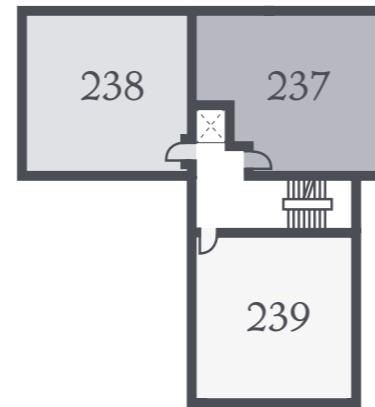
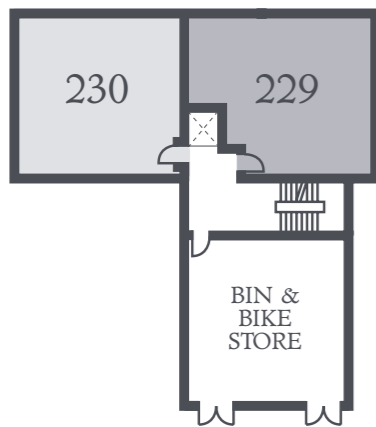


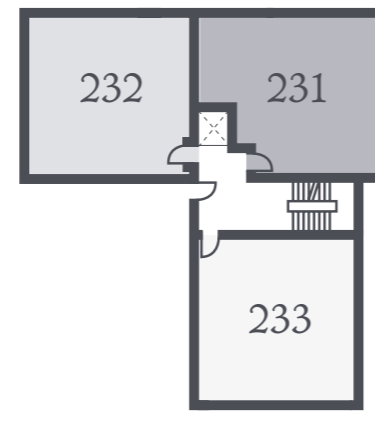
Second Floor



Third Floor



Ground Floor



First Floor



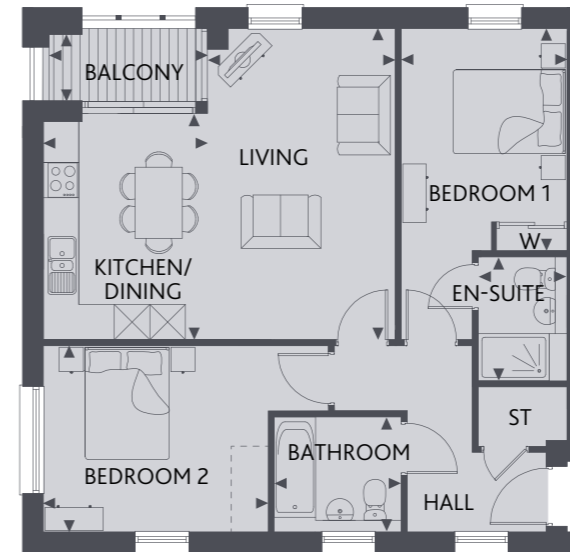
PERFECTLY Connected



Welcome to Watermill Court at Ebbsfleet Plaza, a stylish collection of 11 contemporary two bedroom apartments. Beautifully designed and finished to a high specification, these apartments are perfect for modern living. Ideally located less than a mile from Ebbsfleet International Station, travel to the City and the Continent has never been easier.

Apartment Two

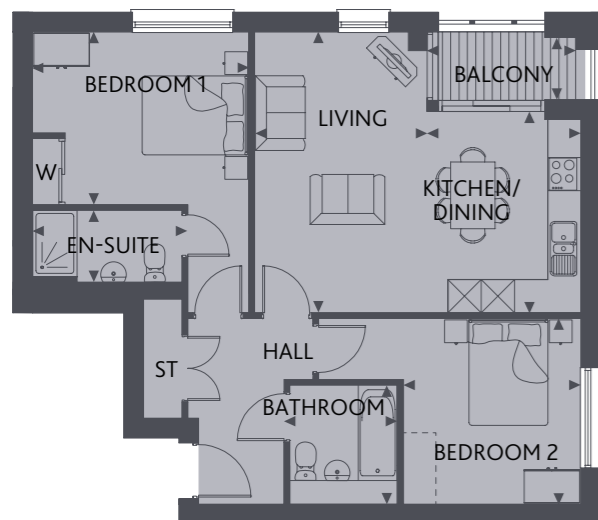
2 BEDROOM APARTMENT
PLOTS 230, 232, 235 & 238



Living Room	17'4" x 10'1"	5.28 x 3.08 m
Kitchen/Dining	12'7" x 8'10"	3.84 x 2.68 m
Bedroom 1	12'8" x 9'2"	3.87 x 2.80 m
En-suite	6'11" x 4'6"	2.11 x 1.38 m
Bedroom 2	12'8" x 10'7"	3.85 x 3.23 m
Bathroom	6'11" x 6'2"	2.10 x 1.87 m
Balcony	8'3" x 4'2"	2.52 x 1.28 m

Apartment One

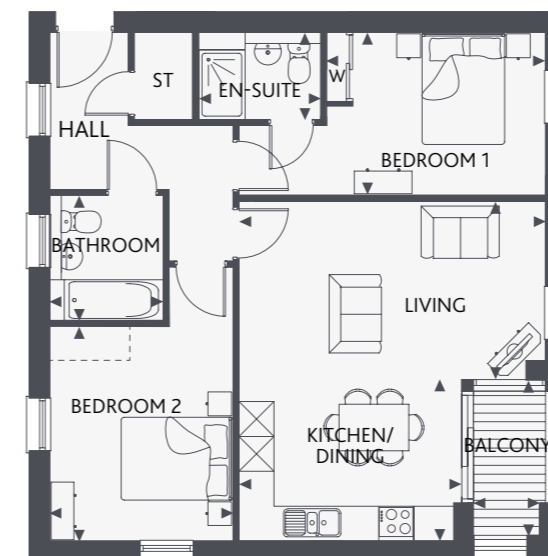
2 BEDROOM APARTMENT
PLOTS 229, 231, 234 & 237



Living Room	17'4" x 10'10"	5.28 x 3.30 m
Kitchen/Dining	12'2" x 8'10"	3.70 x 2.68 m
Bedroom 1	13'1" x 10'7"	3.99 x 3.22 m
En-suite	9'5" x 4'6"	2.86 x 1.38 m
Bedroom 2	11'1" x 10'7"	3.37 x 3.23 m
Bathroom	6'11" x 6'1"	2.10 x 1.85 m
Balcony	8'3" x 4'2"	2.52 x 1.28 m

Apartment Three

2 BEDROOM APARTMENT
PLOTS 233, 236, & 239



Living Room	17'4" x 10'1"	5.28 x 3.08 m
Kitchen/Dining	12'2" x 8'10"	3.70 x 2.68 m
Bedroom 1	12'8" x 9'4"	3.87 x 2.84 m
En-suite	6'11" x 4'6"	2.11 x 1.38 m
Bedroom 2	12'9" x 10'7"	3.89 x 3.23 m
Bathroom	6'11" x 6'2"	2.10 x 1.87 m
Balcony	8'3" x 4'2"	2.52 x 1.28 m

Customers should note this illustration is an example of the apartment type. All dimensions indicated are approximate and furniture layout is for illustrative purposes only. Apartments may be a 'handed' (mirror image) versions of the illustrations. Materials used may differ from plot to plot including render and roof tile colours. Detailed plans and specifications are available for inspection for each plot at our Sales Centre during working hours and customers must check their individual specifications prior to making reservation. Computer Generated Images are indicative only. Details correct at time of print. August 2017.

KEY Hob ST Cupboard W Wardrobe
◀ Denotes where dimensions are taken from
Note: Bedroom dimensions taken into wardrobe recess. All wardrobes are subject to site specification. Please see Sales Consultant for further details.