



# The Kensington End

*Four Bedroom Home*





# The Kensington End

*Four Bedroom Home*

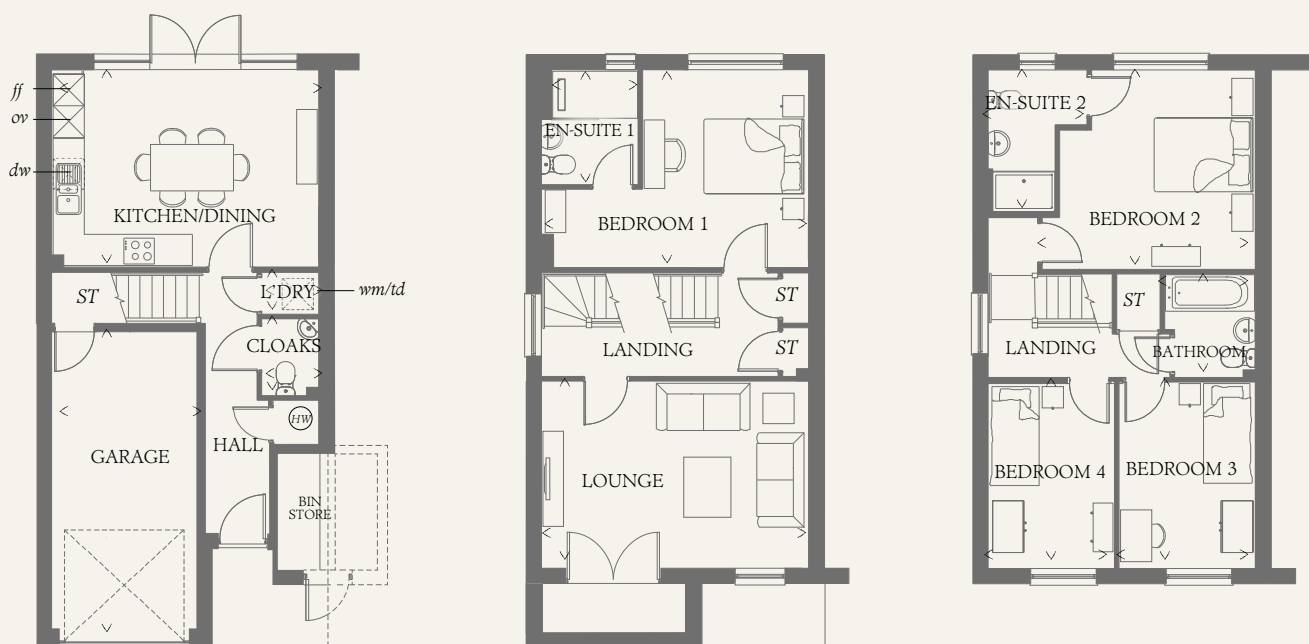




# The Kensington End

## Four Bedroom Home

The Kensington boasts four spacious bedrooms, with two enjoying their own en-suite bathroom. An integrated kitchen/diner and first floor lounge ensures you have all the space necessary for a growing family.



### GROUND FLOOR

KITCHEN/ DINING	16'7" x 12'3"	5.06 x 3.73 m
LAUNDRY	3'6" x 2'6"	1.07 x 0.77 m
CLOAKS	4'10" x 3'6"	1.47 x 1.06 m
GARAGE	19'4" x 9'1"	5.89 x 2.78 m

### FIRST FLOOR

BEDROOM 1	16'7" x 12'3"	5.06 x 3.73 m
EN-SUITE 1	8'9" x 6'2"	2.16 x 1.83 m
LOUNGE	16'7" x 11'8"	5.06 x 3.56 m

### SECOND FLOOR

BEDROOM 2	13'3" x 12'5"	4.04 x 3.79 m
EN-SUITE 2	8'10" x 6'4"	2.69 x 1.92 m
BEDROOM 3	11'7" x 8'10"	3.54 x 2.58 m
BEDROOM 4	11'7" x 7'10"	3.52 x 2.40 m
BATHROOM	6'6" x 5'7"	1.97 x 1.71 m

### CONSUMER CODE FOR HOME BUILDERS

[www.consumercode.co.uk](http://www.consumercode.co.uk)

Customers should note this illustration is an example of the Kensington End house type. All dimensions indicated are approximate and the furniture layout is for illustrative purposes only. Homes may be 'handed' (mirror image) versions of the illustrations, and may be detached, semi-detached or terraced. Materials used may differ from plot to plot including render and roof tile colours. Detailed plans and specifications are available for inspection for each plot at our Sales Centre during working hours and customers must check their individual specifications prior to making a reservation.

#### KEY

Hob	<i>td</i> Tumble dryer space
<i>ov</i> Oven	Hot water cylinder
<i>ff</i> Fridge/freezer	<i>ST</i> Cupboard
<i>wm</i> Washing machine space	
<i>dw</i> Dishwasher space	

> Max dimensions Note: Bedroom dimensions taken into wardrobe recess. All wardrobes are subject to site specification. Please see Sales Consultant for further details.

THINK 191168. EF\_KENS\_EM.7 RV