



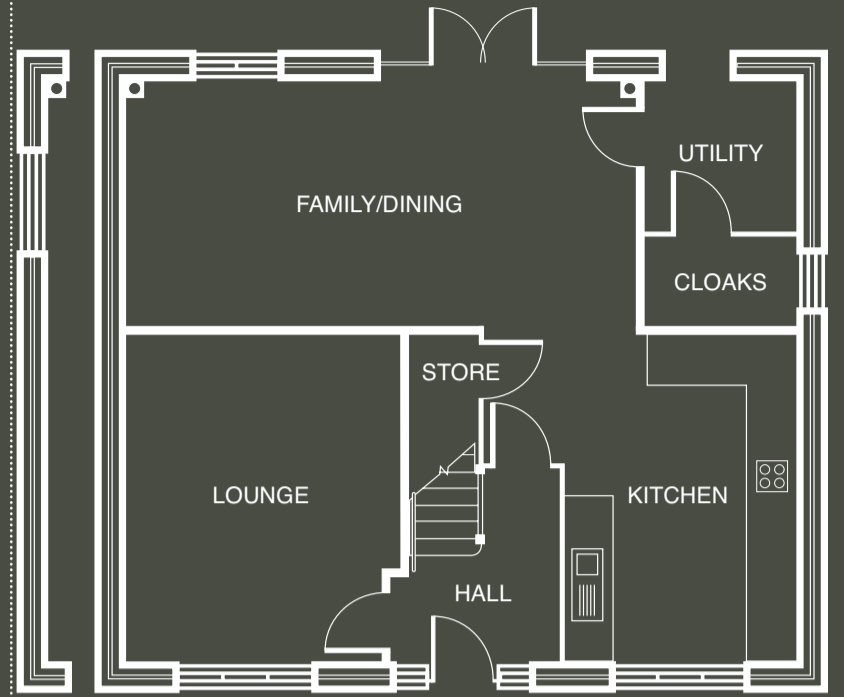
BURCOTE PARK
WOOD BURCOTE

Bay Lifestyle

3 BEDROOM HOME

Plot No. 137, 147, 151, 168, 177, 180, 191, 193, 194

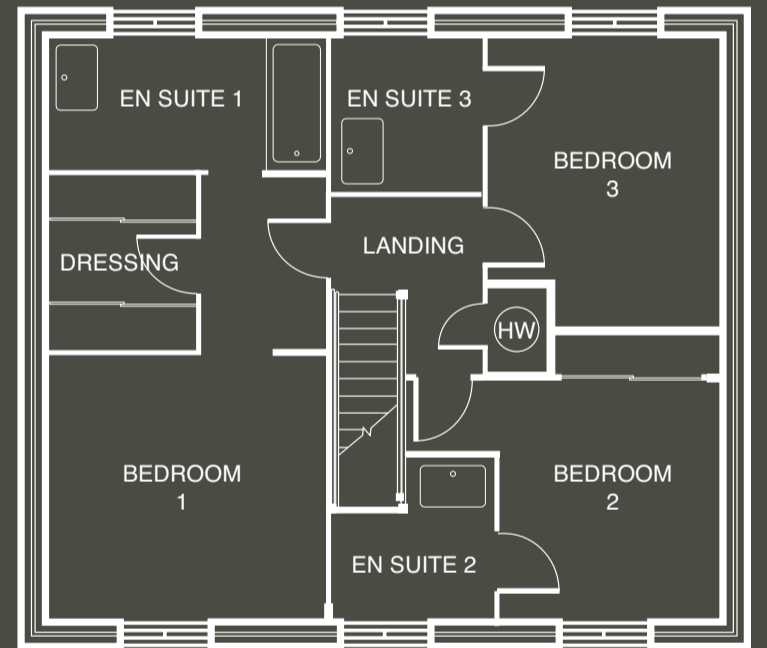
Why try to fit your life into a standard home when you can choose a home that fits your life? The Bay Lifestyle may boast traditional double-fronted style on the outside, but inside its light-filled, modern, open-plan spaces are perfectly in tune with 21st-century luxury living ideals.



CORNER VARIATION Plot 168 and 194 only

GROUND FLOOR

LOUNGE	12'1" X 14'7"	3.70 X 4.49M
KITCHEN	10'4" X 13'9"	3.17 X 4.24M
FAMILY/DINING	22'6" X 11'1"	6.89 X 3.37M
CLOAKS	6'9" X 4'0"	2.09 X 1.22M
UTILITY	6'9" X 6'8"	2.09 X 2.07M



FIRST FLOOR

BEDROOM 1	12'3" X 11'9"	3.74 X 3.62M
EN SUITE 1	12'3" X 6'2"	3.74 X 1.88M
DRESSING	6'7" X 7'4"	2.05 X 2.27M
BEDROOM 2	9'8" X 12'9"	2.98 X 3.94M
EN SUITE 2	7'2" X 7'4"	2.18 X 2.27M
BEDROOM 3	10'4" X 12'9"	3.16 X 3.92M
EN SUITE 3	6'7" X 7'2"	2.00 X 2.19M

NOTE: Sloping soffits to first floor. All wardrobes are optional and positions shown are for information only. *Maximum dimension.

Customers should note this illustration is an example of the Bay Lifestyle house type. All dimensions indicated are approximate and for illustrative purposes only. All wardrobes are subject to site specification, please see Sales Consultant for further details. Homes may be a 'handed' (mirror image) versions of the illustrations, and may be detached, semi-detached or terraced. Materials used may differ from plot to plot including render and roof tile colours. Detailed plans and specifications are available for inspection for each plot at our Marketing Suite during working hours and customers must check their individual specifications prior to making reservation.