



# The Henley

*Four Bedroom Home*

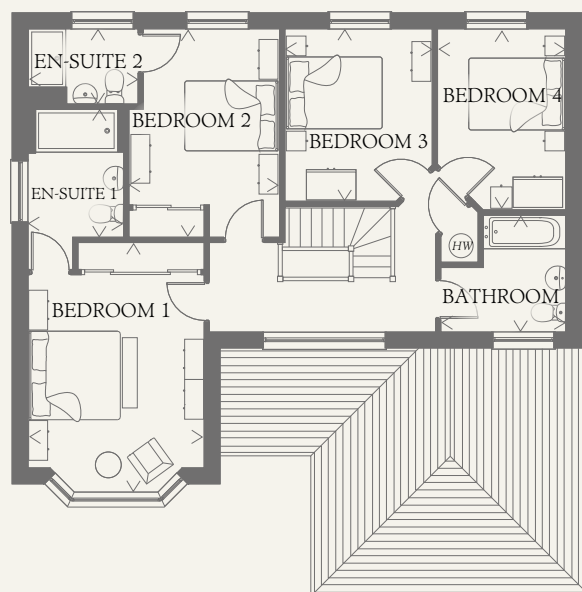
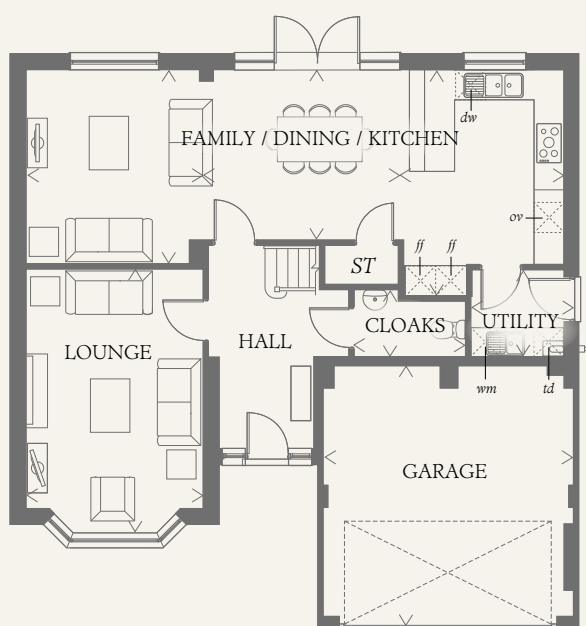




# The Henley

## Four Bedroom Home

As an executive home, the Henley is undeniably impressive, with a double garage, two en-suite bedrooms and thirty-six foot family dining and kitchen area. A generously proportioned home of real quality and character.



### GROUND FLOOR

LOUNGE	17'7" x 11'11"	5.37 x 3.63 m
KITCHEN/ DINING/ FAMILY	36'3" x 13'5"	11.05 x 3.98 m
UTILITY	6'3" x 6'2"	1.90 x 1.87 m
CLOAKS	7'6" x 4'7"	2.28 x 1.40 m
GARAGE	17'7" x 17'0"	5.36 x 5.18 m

### FIRST FLOOR

BEDROOM 1	16'10" x 11'11"	5.12 x 3.95 m
EN-SUITE 1	8'8" x 6'6"	3.29 x 1.98 m
BEDROOM 2	14'1" x 10'3"	4.29 x 3.11 m
EN-SUITE 2	7'6" x 5'1"	2.27 x 1.55 m
BEDROOM 3	11'8" x 9'11"	3.55 x 3.02 m
BEDROOM 4	12'2" x 8'7"	3.71 x 2.63 m
BATHROOM	8'5" x 7'11"	2.57 x 2.41 m

#### CONSUMER CODE FOR HOME BUILDERS

[www.consumercode.co.uk](http://www.consumercode.co.uk)

Customers should note this illustration is an example of the Henley house type. All dimensions indicated are approximate and the furniture layout is for illustrative purposes only. Homes may be 'handed' (mirror image) versions of the illustrations, and may be detached, semi-detached or terraced. Materials used may differ from plot to plot including render and roof tile colours. Detailed plans and specifications are available for inspection for each plot at our Sales Centre during working hours and customers must check their individual specifications prior to making a reservation.

#### KEY

Hob	Tumble dryer space
Oven	Hot water cylinder
Fridge/freezer	Cupboard
Washing machine space	
Dishwasher space	

< Denotes where dimensions are taken from. All wardrobes are subject to site specification. Please see Sales Consultant for further details.

THINK\_EF\_HENL\_DM.6.0 | AF 1189232

