



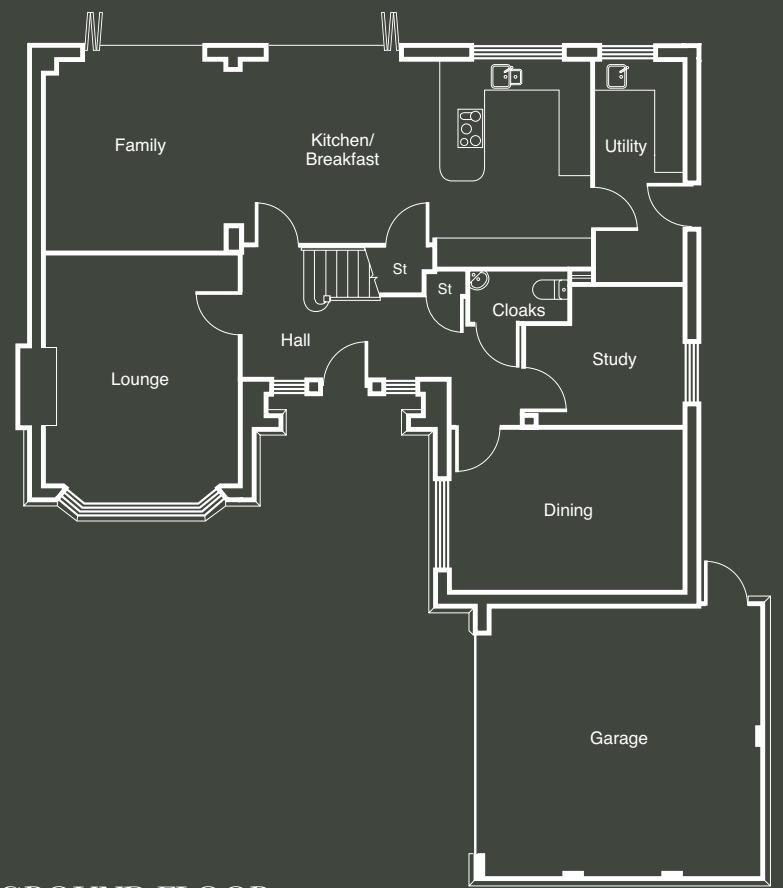
OAK VIEW
BURCOTE PARK, WOOD BURCOTE

Mulberry

FIVE BEDROOM HOME | 2537 SQ FT

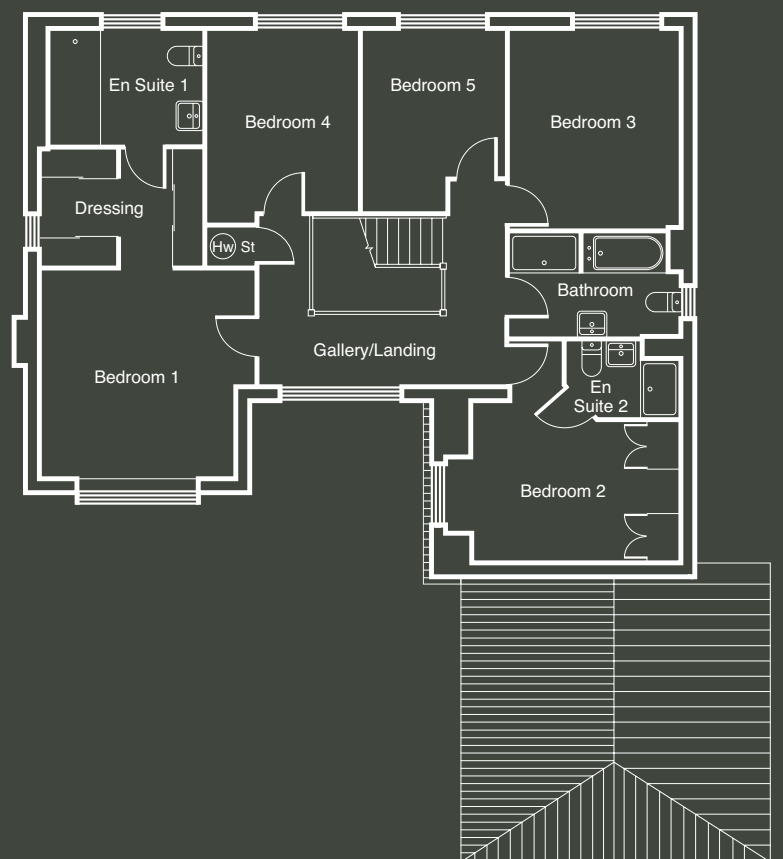
Plot No. 94, 103, 104, 109, 112, 117

The Mulberry is a handsome home of remarkable refinement that incorporates a host of distinguished design features, putting it in a class of its own for quality and charm. A splendid home of substance, with an unrivalled sense of character and style.



GROUND FLOOR

LOUNGE	16'10" X 16'56"*	5.12 X 5.05M*
FAMILY	12'8" X 12'63"*	3.85 X 3.85M*
KITCHEN/BREAKFAST	24'5" X 13'9"*	7.45 X 4.19M*
UTILITY	14'10" X 5'10"	4.51 X 1.78M
CLOAKS	6'7" X 3'3"	2.00 X 0.99M
STUDY	10'6" X 9'3"*	3.20 X 2.83M*
DINING	15'7" X 10'8"	4.75 X 3.26M
GARAGE	19'0" X 18'1"*	5.80 X 5.52M*



FIRST FLOOR

BEDROOM 1	14'5" X 13'11"*	4.39 X 4.23M*
EN SUITE 1	9'11" X 7'7"*	3.03 X 2.32M*
DRESSING	10'11" X 7'10"	3.32 X 2.39M
BEDROOM 2	15'7" X 14'9"*	4.75 X 4.50M*
EN SUITE 2	7'9" X 5'1"*	2.35 X 1.56M*
BEDROOM 3	13'3" X 11'5"	4.03 X 3.48M
BEDROOM 4	12'10" X 10'1"*	3.91 X 3.09M*
BEDROOM 5	12'2" X 9'6"*	3.71 X 2.90M*
BATHROOM	11'5" X 6'11"*	3.48 X 2.10M*

NOTE: Sloping soffits to first floor. All wardrobes are optional and positions shown are for information only. *Maximum dimension.

Customers should note this illustration is an example of the Mulberry housetype. All dimensions indicated are approximate and for illustrative purposes only. All wardrobes are subject to site specification, please see sales consultant for further details. Homes may be a 'handed' (mirror image) versions of the illustrations, and may be detached, semi-detached or terraced. Materials used may differ from plot to plot including render and roof tile colours. Detailed plans and specifications are available for inspection for each plot at our Marketing Suite during working hours and customers must check their individual specifications prior to making reservation.