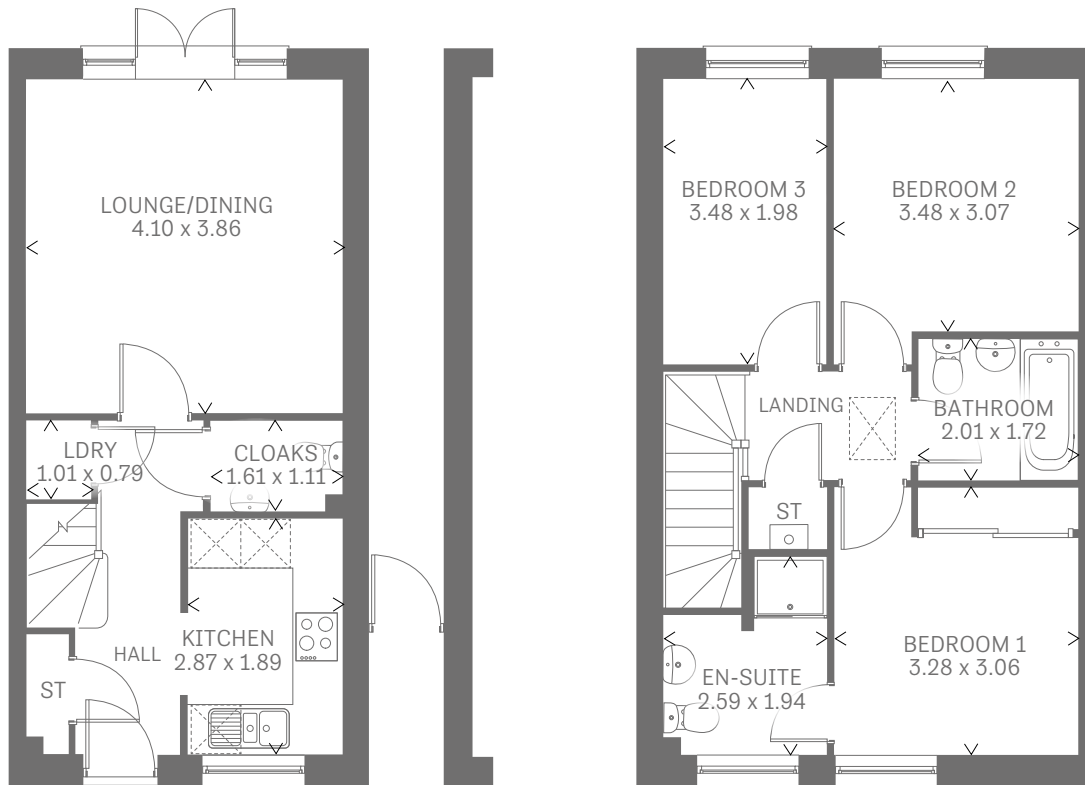


Conwy 3

THREE BEDROOM MID TERRACE HOME





Three Bedroom Home

The Conwy 3 makes the most of a wider first floor to create a third bedroom above the generous lounge/dining area and open kitchen, creating a stylish family home that has lots of space for everyone.

GROUND FLOOR

| | | |
|-------------------|---------------|---------------|
| Lounge/ Dining | 13'5" x 12'8" | 4.10 x 3.86 m |
| Kitchen | 9'5" x 6'2" | 2.87 x 1.89 m |
| Cloaks | 5'4" x 3'8" | 1.61 x 1.11 m |
| Laundry | 3'4" x 2'7" | 1.01 x 0.79 m |

FIRST FLOOR

| | | |
|-----------|---------------|---------------|
| Bedroom 1 | 10'9" x 10'0" | 3.28 x 3.06 m |
| En-suite | 8'6" x 6'5" | 2.59 x 1.94 m |
| Bedroom 2 | 11'5" x 10'1" | 3.48 x 3.07 m |
| Bedroom 3 | 11'5" x 6'6" | 3.48 x 1.98 m |
| Bathroom | 6'7" x 5'8" | 2.01 x 1.72 m |

CONSUMER CODE FOR HOME BUILDERS

www.consumercode.co.uk

Customers should note this illustration is an example of the Conwy 3 house type. All dimensions indicated are approximate and furniture layout is for illustrative purposes only. Homes may be 'handed' (mirror image) versions of the illustrations, and may be detached, semi-detached or terraced. Materials used may differ from plot to plot including render and roof tile colours. Detailed plans and specifications are available for inspection for each plot at our Sales Centre during working hours and customers must check their individual specifications prior to making a reservation.

KEY Hob Oven Fridge/freezer Washing machine space dw Dishwasher space td Tumble dryer Hot water cylinder ST Cupboard

Note: Bedroom dimensions taken into wardrobe recess. All wardrobes are subject to site specification. Please see Sales Consultant for further details.

Traditional homes, built the way you remember

