

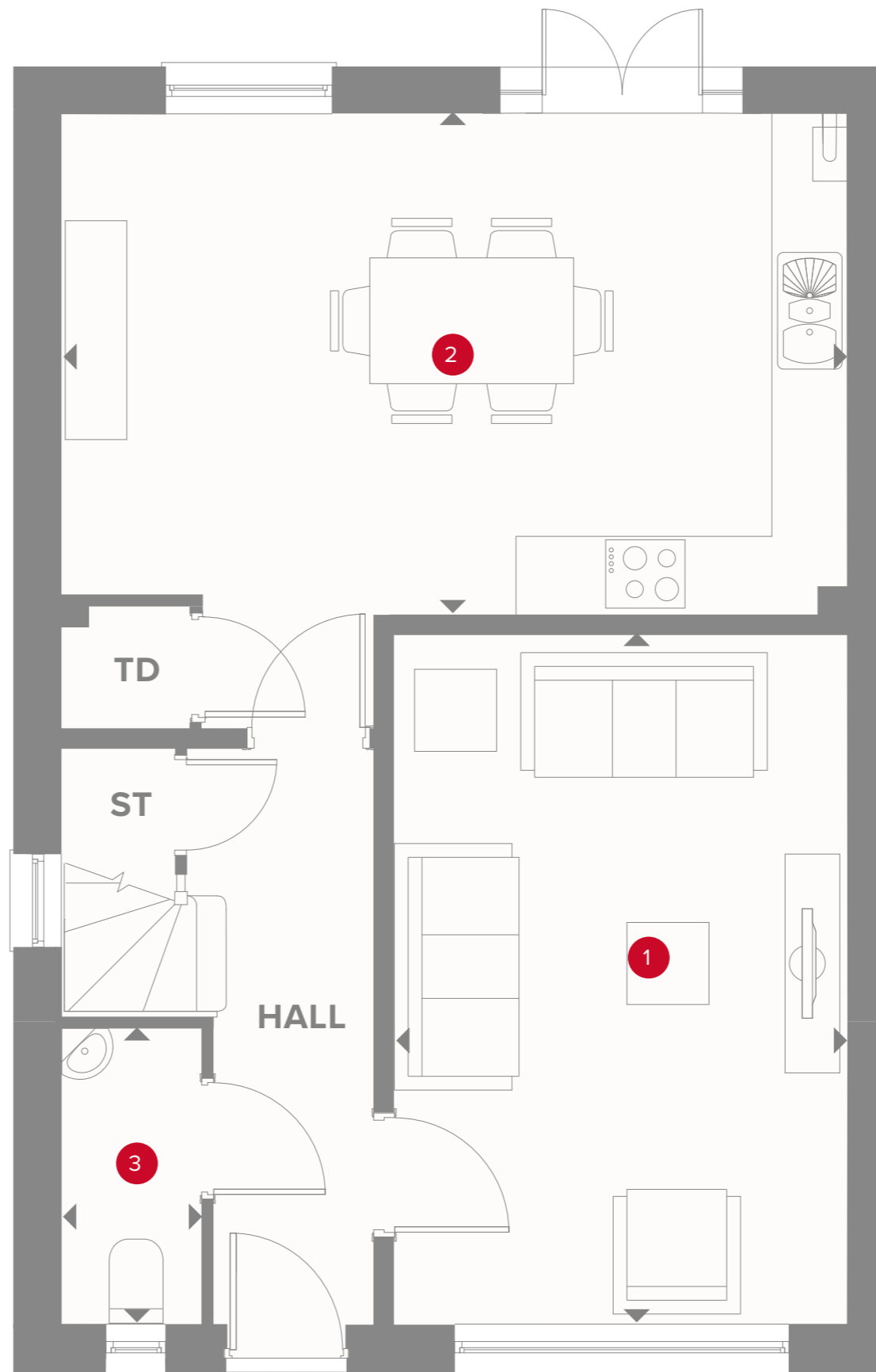
THE ROWAN

FOUR BEDROOM HOME



THE ROWAN GROUND FLOOR

- 1** Lounge
16'9" x 11'0" 5.11 x 3.35 m
- 2** Kitchen/dining
19'1" x 12'2" 5.82 x 3.71 m
- 3** Cloaks
7'2" x 3'5" 2.19 x 1.03 m

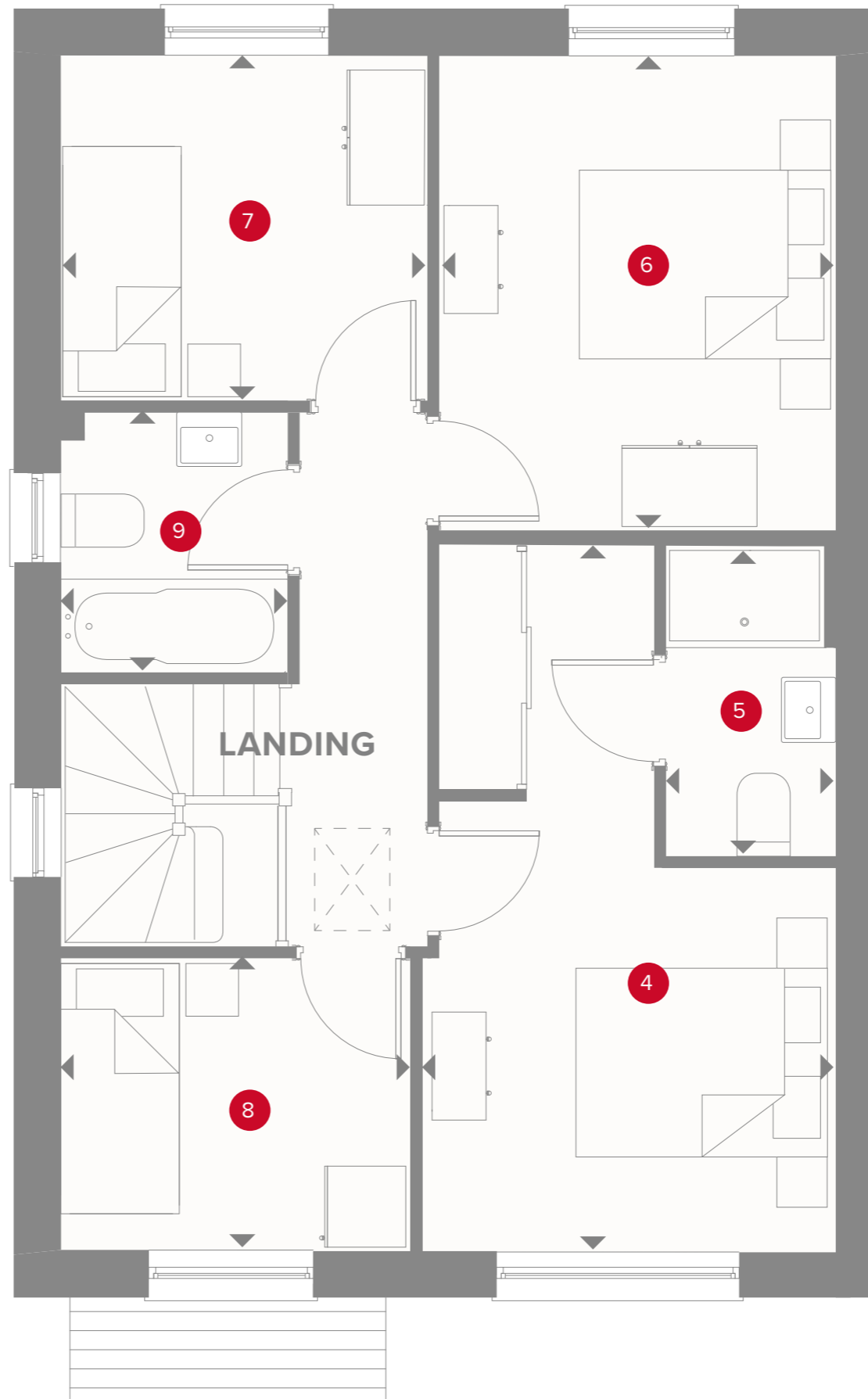


KEY

- Hob
- OV** Oven
- FF** Fridge/freezer
- TD** Tumble dryer space
- WM** Washing machine space
- ST** Storage cupboard
- Dimensions start

THE ROWAN FIRST FLOOR

- 5 Bedroom 1
17'4" x 10'2" 5.29 x 3.11 m
- 6 En-suite
7'7" x 4'2" 2.32 x 1.28 m
- 7 Bedroom 2
11'8" x 9'9" 3.56 x 2.98 m
- 8 Bedroom 3
9'0" x 8'6" 2.75 x 2.59 m
- 9 Bedroom 4
8'7" x 7'0" 2.62 x 2.13 m
- 10 Bathroom
6'4" x 5'4" 1.92 x 1.67 m



KEY

- ◀ Dimensions start
- ST Storage cupboard

Customers should note this illustration is an example of the Rowan house type. All dimensions indicated are approximate and the furniture layout is for illustrative purposes only. Homes may be 'handed' (mirror image) versions of the illustrations, and may be detached, semi-detached or terraced. Materials used may differ from plot to plot including render and roof tile colours. Detailed plans and specifications are available for inspection for each plot at our Sales Centre during working hours and customers must check their individual specifications prior to making a reservation. All wardrobes are subject to site specification. Please see Sales Consultant for further details.