



The Marlow[†]

Four Bedroom Home

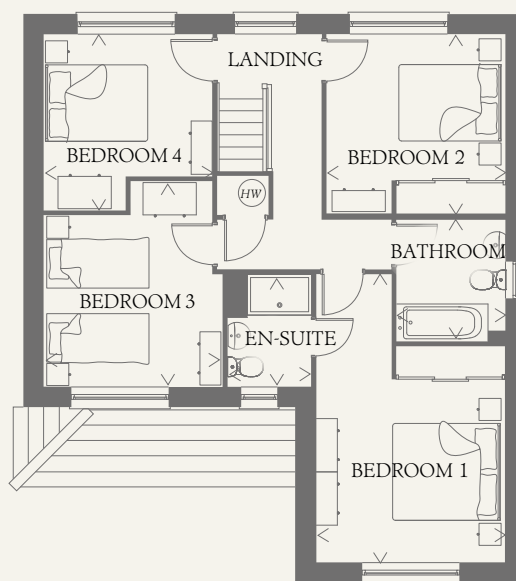
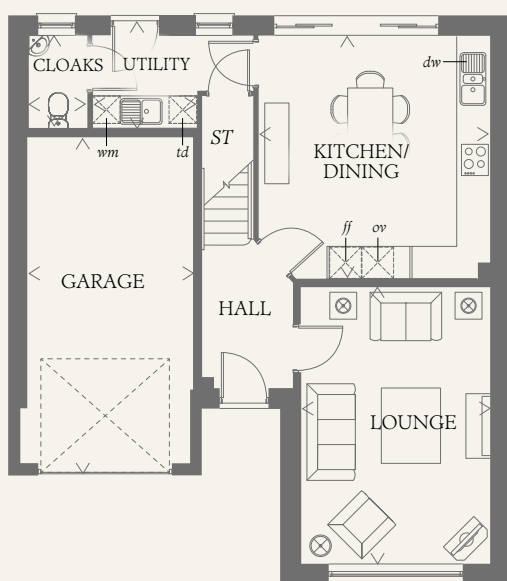




The Marlow[†]

Four Bedroom Home | 1312 sq ft

This home has extensive living space that excels at every turn, from the pleasing proportions of every room to the excellent use of space, from the well thought out flow of life and light to the luxurious finishing touches.



GROUND FLOOR

LOUNGE	17'0" x 11'9"	5.19 x 3.57 m
KITCHEN/ DINING	15'0" x 14'3"	4.58 x 4.34 m
UTILITY	6'5" x 5'11"	1.95 x 1.81 m
CLOAKS	5'11" x 3'8"	1.81 x 1.12 m
GARAGE	19'11" x 10'1"	6.07 x 3.08 m

FIRST FLOOR

BEDROOM 1	17'11" x 11'9"	5.47 x 3.57 m
EN-SUITE 1	7'1" x 5'1"	2.17 x 1.56 m
BEDROOM 2	11'0" x 11'0"	3.36 x 3.35 m
BEDROOM 3	12'7" x 10'7"	3.84 x 3.22 m
BEDROOM 4	10'10" x 10'4"	3.30 x 3.16 m
BATHROOM	7'5" x 6'9"	2.26 x 2.05 m

**CONSUMER
CODE FOR
HOME BUILDERS**

www.consumercode.co.uk

Customers should note this illustration is an example of the Marlow+ house type. All dimensions indicated are approximate and the furniture layout is for illustrative purposes only. Homes may be 'handed' (mirror image) versions of the illustrations, and may be detached, semi-detached or terraced. Materials used may differ from plot to plot including render and roof tile colours. Detailed plans and specifications are available for inspection for each plot at our Sales Centre during working hours and customers must check their individual specifications prior to making a reservation.

KEY

Hob	Tumble dryer space
Oven	Hot water cylinder
Fridge/freezer	Cupboard
Washing machine space	
Dishwasher space	

[†] Denotes where dimensions are taken from. All wardrobes are subject to site specification. Please see Sales Consultant for further details.

THINK 192608. WF_MARW+_DM.2 RV

