



# The Fairford

*Three Bedroom Home*

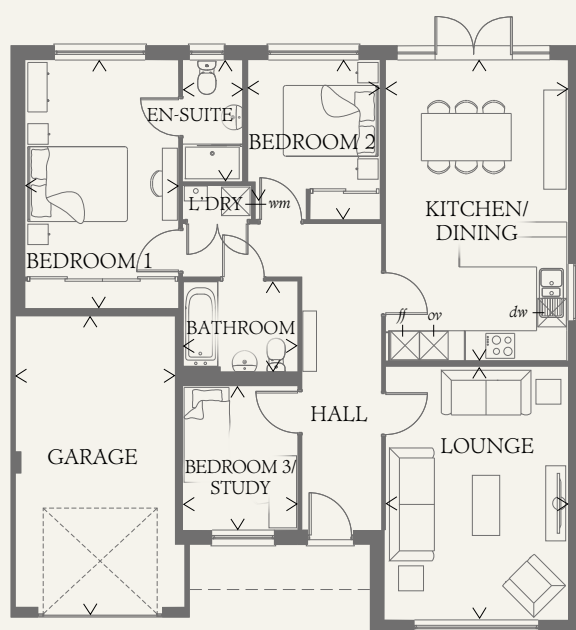




# The Fairford

## Three Bedroom Home

The smart design of the Fairford means there's room for everything you'd expect and more including an en-suite master bedroom, separate lounge and even a study. Add a convenient integral garage and you have a home of real quality.



### FIRST FLOOR

LOUNGE	16'7" x 11'11"	5.05 x 3.63 m	BEDROOM 3/ STUDY	9'5" x 7'7"	2.86 x 2.30 m
KITCHEN/ DINING	19'8" x 11'11"	6.00 x 3.63 m	BATHROOM	7'7" x 5'11"	2.30 x 1.81 m
BEDROOM 1	16'3" x 10'0"	4.95 x 3.05 m	GARAGE	19'2" x 10'6"	5.83 x 3.19 m
EN-SUITE 1	7'11" x 3'11"	2.41 x 1.19 m			
BEDROOM 2	10'5" x 8'8"	3.17 x 2.64 m			

#### CONSUMER CODE FOR HOME BUILDERS

[www.consumercode.co.uk](http://www.consumercode.co.uk)

Customers should note this illustration is an example of the Fairford house type. All dimensions indicated are approximate and the furniture layout is for illustrative purposes only. Homes may be 'handed' (mirror image) versions of the illustrations, and may be detached, semi-detached or terraced. Materials used may differ from plot to plot including render and roof tile colours. Detailed plans and specifications are available for inspection for each plot at our Sales Centre during working hours and customers must check their individual specifications prior to making a reservation.

#### KEY

Hob	Hot water cylinder
Oven	Cupboard
Fridge/freezer	
Washing machine space	
Dishwasher space	

> Max dimensions Note: Bedroom dimensions taken into wardrobe recess. All wardrobes are subject to site specification. Please see Sales Consultant for further details.

THINK 202837\_EF\_FAIR\_DM.5 RV