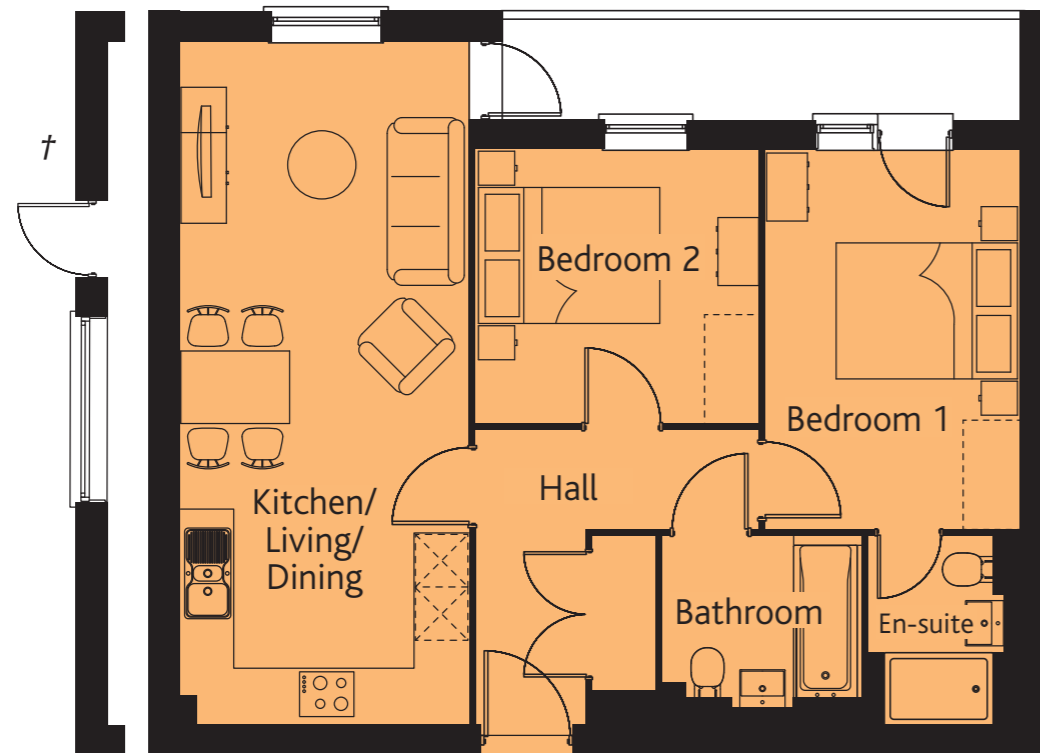


Plots 95, 108, 120 & 129

† Elevation variation to plot 129 only



## THE FENTON

Kitchen/ Living/ Dining	24'10" x 10'8"	7.57 x 3.26 m
Bedroom 1	13'9" x 9'2"	4.21 x 2.81 m
En-suite	6'10" x 4'11"	2.08 x 1.50 m
Bedroom 2	10'4" x 9'11"	3.15 x 3.04 m
Bathroom	7'3" x 6'4"	2.22 x 1.92 m

**KEY**  Electric hob. Please see Sales Consultant for further details.

Customers should note this illustration is an example of the Fenton apartment type. Please refer to your Sales Consultant for details of any elevational differences. All dimensions indicated are approximate. The specifications will vary from site to site and plot to plot. Detailed plans and specifications are available for inspection for each plot at our Sales Centre during working hours and customers must check their individual specifications prior to making a reservation. Please note, steel frame apartment types will benefit from a slight increase to some room sizes.