



# The Hadleigh

*Two Bedroom Home*

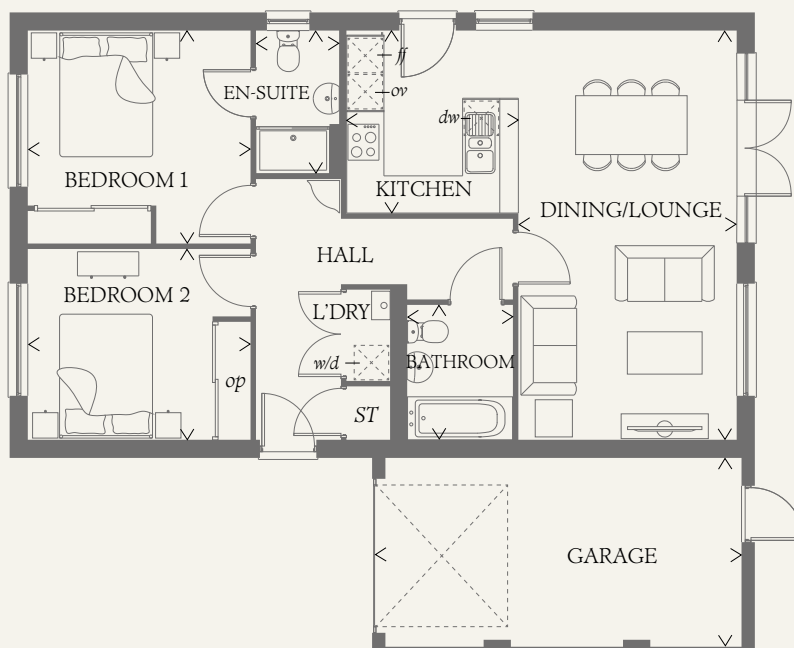




# The Hadleigh

## Two Bedroom Home

The open plan design of the Hadleigh makes the most of the space, yet keeps it compact and easy to manage. With a combined living/dining/ kitchen area forming the heart of your home, and the luxury of an en-suite master bedroom.



### GROUND FLOOR

DINING/ LOUNGE	21'6" x 11'6"	6.55 x 3.50 m	BEDROOM 2	11'9" x 10'0"	3.57 x 3.05 m
KITCHEN	9'7" x 9'1"	2.93 x 2.78 m	BATHROOM	7'1" x 5'7"	2.15 x 1.70 m
BEDROOM 1	11'9" x 11'2"	3.57 x 3.41 m	GARAGE	19'5" x 10'0"	5.92 x 3.05 m
EN-SUITE	7'6" x 4'5"	2.28 x 1.34 m			

#### CONSUMER CODE FOR HOME BUILDERS

[www.consumercode.co.uk](http://www.consumercode.co.uk)

Customers should note this illustration is an example of the Hadleigh house type. All dimensions indicated are approximate and the furniture layout is for illustrative purposes only. Homes may be 'handed' (mirror image) versions of the illustrations, and may be detached, semi-detached or terraced. Materials used may differ from plot to plot including render and roof tile colours. Detailed plans and specifications are available for inspection for each plot at our Sales Centre during working hours and customers must check their individual specifications prior to making a reservation.

#### KEY

Hob

Oven

Fridge/freezer

Washer/dryer space

Dishwasher space

Cupboard

Optional wardrobe

Redrow.co.uk give notice that the property particulars and related information on this site, whilst believed to be accurate, are set as a general outline for guidance only. Intending purchasers should not rely on them as statements or representations of fact, but must satisfy themselves before physical inspection as to their availability, or by physical inspection of the property in question or otherwise as to their accuracy or fit for purpose. Consequently, no information displayed on this site (or linked sites) constitutes or forms part of a contract. Materials used may differ from plot to plot including render and roof tile colours.

> Max dimensions Note: Bedroom dimensions taken into wardrobe recess. All wardrobes are subject to site specification. Please see Sales Consultant for further details.

THINK 186434. EF\_HADL\_DM.4.0 RV