

# BRAMHOPE

4 BEDROOM HOME

SEMI - DETACHED



LEEDS



With four bedrooms plus a good-sized lounge and kitchen-diner, the Bramhope is a wonderful choice for nearly anyone. Whether you're a smaller family that values their space, a young professional who likes to entertain, or someone looking to house share - take this versatile space and make it your own.

## GROUND FLOOR

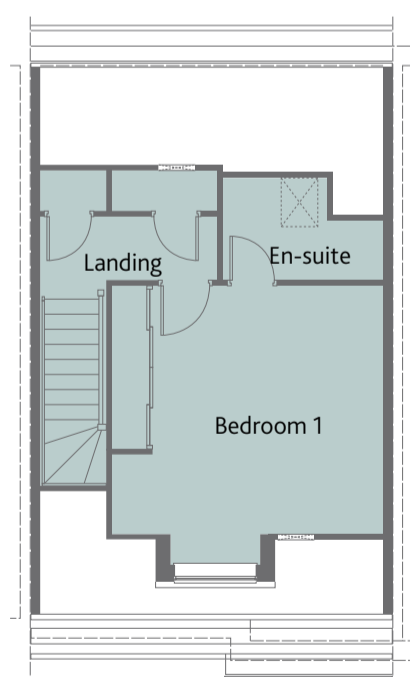
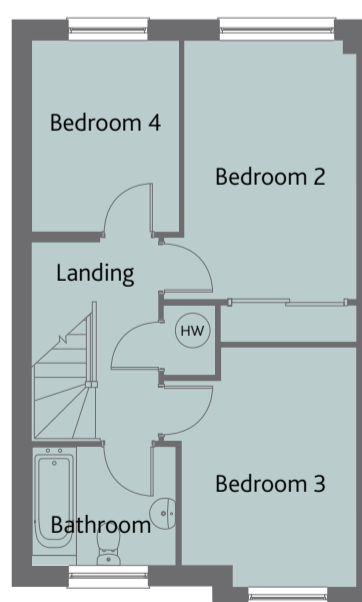
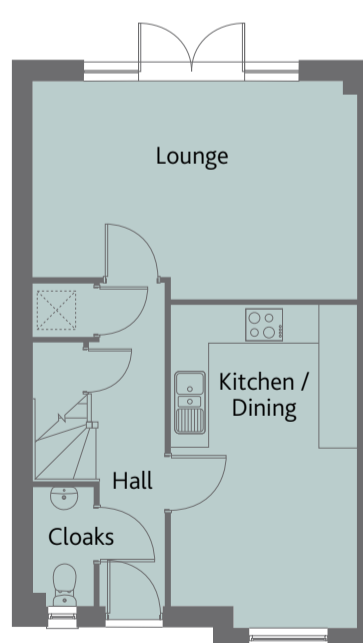
Kitchen / Dining	16'8" x 9'7"	5.07 x 2.93 m
Lounge	16'8" x 11'3"	5.09 x 3.43 m
Cloaks	6'2" x 3'1"	1.87 x 0.93 m
Laundry	3'8" x 2'8"	1.11 x 0.82 m

## FIRST FLOOR

Bedroom 2	15'6" x 8'10"	4.06 x 2.70 m
Bedroom 3	12'2" x 9'0"	3.71 x 2.75 m
Bedroom 4	9'10" x 7'7"	3.00 x 2.30 m
Bathroom	7'5" x 6'2"	2.26 x 1.87 m

## SECOND FLOOR

Bedroom 1	13'9" x 11'2"	4.00 x 3.72 m
En-suite 1	7'9" x 5'0"	2.37 x 1.53 m



## 4 BEDROOM HOME

Customers should note this illustration is an example of the Bramhope house type. All dimensions indicated are approximate and the furniture layout is for illustrative purposes only. Homes may be 'handed' (mirror image) versions of the illustrations, and may be detached, semi-detached or terraced. Materials used may differ from plot to plot including render and roof tile colours. Detailed plans and specifications are available for inspection for each plot at our Sales Centre during working hours and customers must check their individual specifications prior to making a reservation.

KEY Hob Hot water cylinder ST Cupboard

Note: Bedroom dimensions taken into wardrobe recess. All wardrobes are subject to site specification. Please see Sales Consultant for further details.

