



Visit: redrow.co.uk/abode



ABODE 111 MID
2 BEDROOM HOME

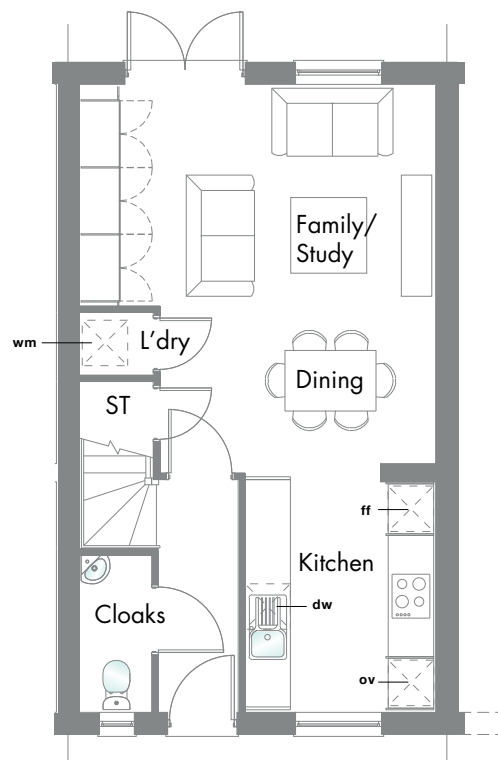
2 BEDROOM HOME

1110 SQFT

The three storey Abode 111 offers a new take on luxury family living with an open plan ground floor, separate lounge, magnificent master bedroom and a further en-suite double room at the top.



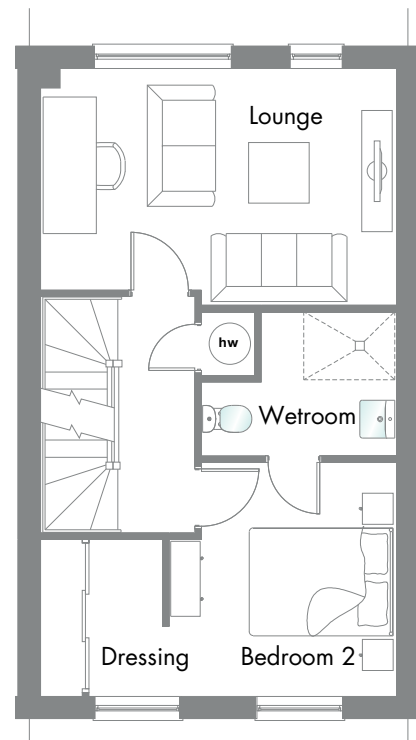
GROUND FLOOR



G

Family/Study	13'7" x 9'6"	4.15 x 2.90 m*
Kitchen	10'4" x 8'2"	3.14 x 2.49 m
Dining	11'10" x 7'3"	3.61 x 2.21 m*
Cloaks	6'9" x 3'1"	2.05 x 0.93 m
Laundry	3'1" x 2'9"	0.95 x 0.83 m

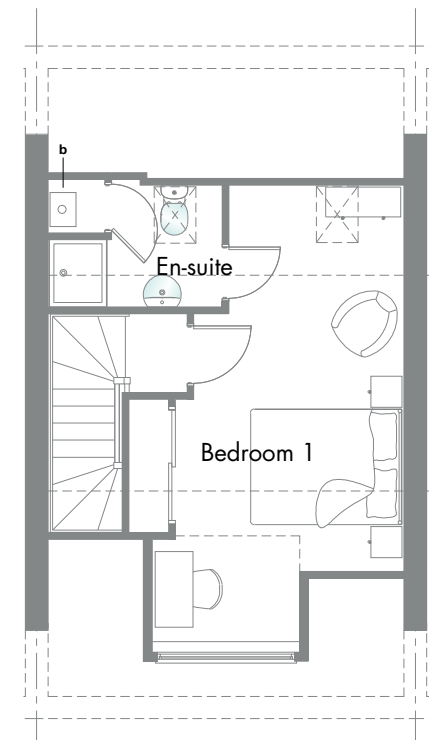
FIRST FLOOR



F

Lounge	15'3" x 10'2"	4.65 x 3.10 m*
Bedroom 2	10'0" x 9'9"	3.06 x 2.97 m*
Dressing	6'9" x 5'3"	2.05 x 1.59 m
Wetroom	8'2" x 6'3"	2.49 x 1.90 m*

SECOND FLOOR



S

Bedroom 1	16'9" x 6'7"	5.11 x 2.92 m*
En-suite	7'6" x 5'3"	2.28 x 1.61 m*

Hob Oven Fridge/Freezer Washing Machine space
 Dishwasher space Boiler Hot Water Cylinder
 *Max dimensions Note: Bedroom dimensions taken into wardrobe recess
 Wardrobes are an upgrade item

Customers should note this illustration is an example of The Abode 111 house type. All dimensions indicated are approximate and the furniture layout is for illustrative purposes only. Homes may be 'handed' (mirror image) versions of the illustrations, and may be detached, semi-detached or terraced. Materials used may differ from plot to plot including render and roof tile colours. Detailed plans and specifications are available for inspection for each plot at our Sales Hub during working hours and customers must check their individual specifications prior to making a reservation. Please see Sales Consultant for further details.