



Visit: redrow.co.uk

ABODE **129**_{MID}
2 BEDROOM HOME

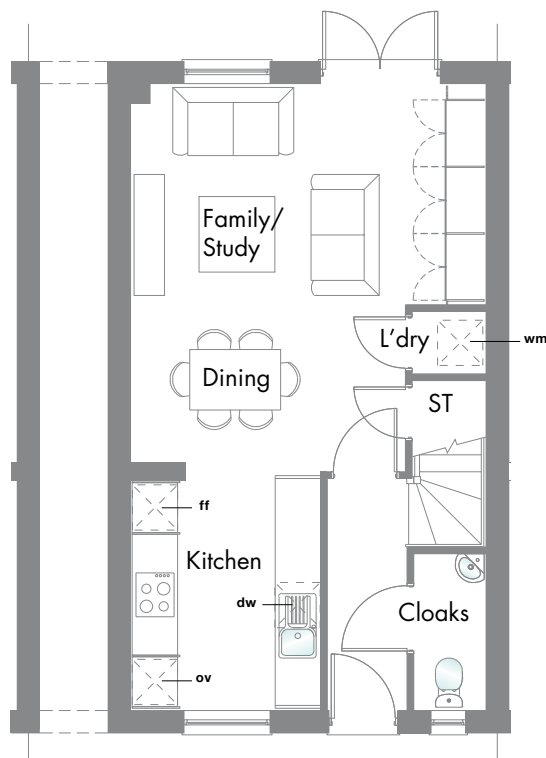
2 BEDROOM HOME

1286 SQFT

Wider on the top two floors, the Abode 129 offers even more space in its separate first floor lounge and two en-suite double bedrooms, adding to the sense of luxury living.



GROUND FLOOR

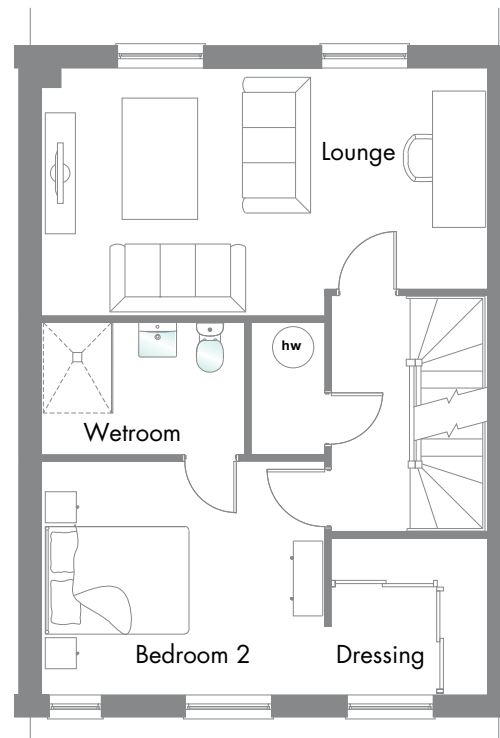


G

Family/ Study	13'7" x 9'6"	4.15 x 2.90 m*
Kitchen	10'4" x 8'2"	3.14 x 2.49 m
Dining	11'10" x 7'3"	3.61 x 2.21 m*
Cloaks	6'9" x 3'2"	2.05 x 0.96 m
Laundry	3'1" x 2'9"	0.95 x 0.83 m

Hob **ov** Oven **ff** Fridge/Freezer **wm** Washing Machine
dw Dishwasher space **b** Boiler **hw** Hot Water Cylinder
 *Max dimensions Note: Bedroom dimensions taken into wardrobe recess
 Wardrobes are an upgrade item

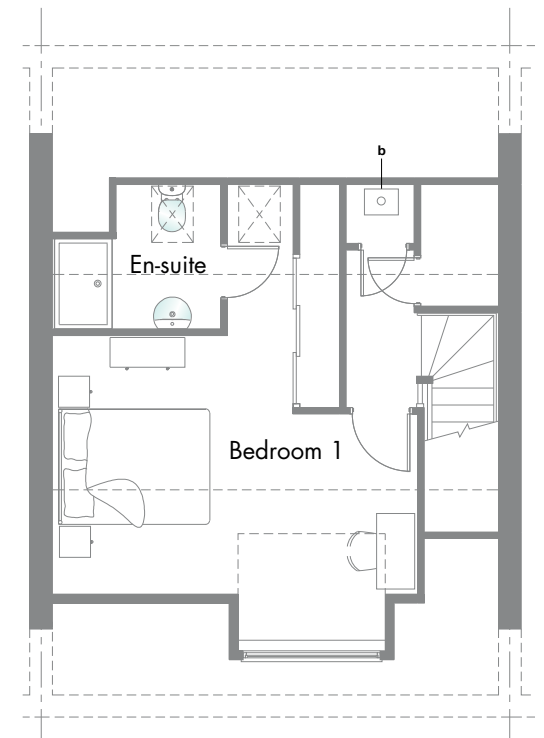
FIRST FLOOR



F

Lounge	19'2" x 10'8"	5.85 x 3.25 m*
Bedroom 2	12'2" x 10'0"	3.72 x 3.06 m*
Wetroom	8'9" x 5'9"	2.66 x 1.75 m*
Dressing	6'9" x 6'8"	2.05 x 2.04 m

SECOND FLOOR



S

Bedroom 1	15'7" x 11'4"	4.75 x 3.46 m*
En-suite	7'3" x 6'3"	2.21 x 1.91 m*

Customers should note this illustration is an example of The Abode 129 house type. All dimensions indicated are approximate and the furniture layout is for illustrative purposes only. Homes may be 'handed' (mirror image) versions of the illustrations, and may be detached, semi-detached or terraced. Materials used may differ from plot to plot including render and roof tile colours. Detailed plans and specifications are available for inspection for each plot at our Sales Hub during working hours and customers must check their individual specifications prior to making a reservation. Please see Sales Consultant for further details.