

Visit: [redrow.co.uk](http://redrow.co.uk)



ABODE **77** MID  
2 BEDROOM HOME

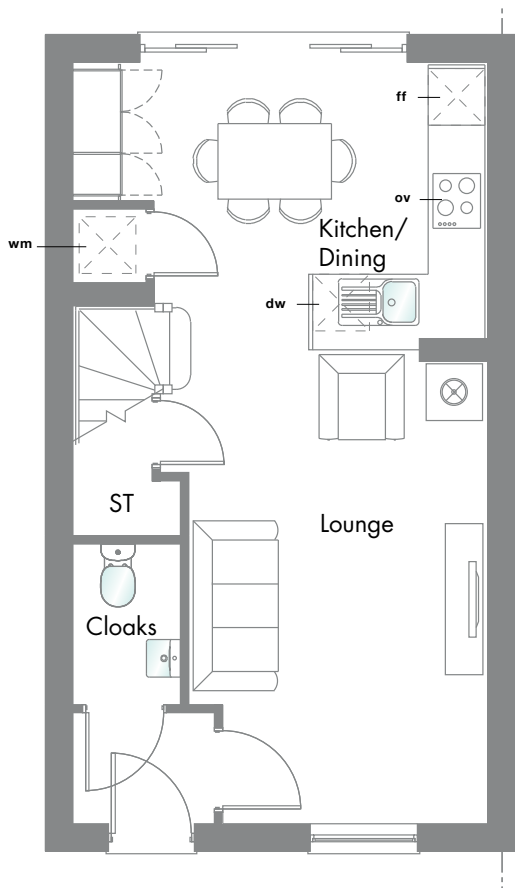
# 2 BEDROOM HOME

762 SQFT

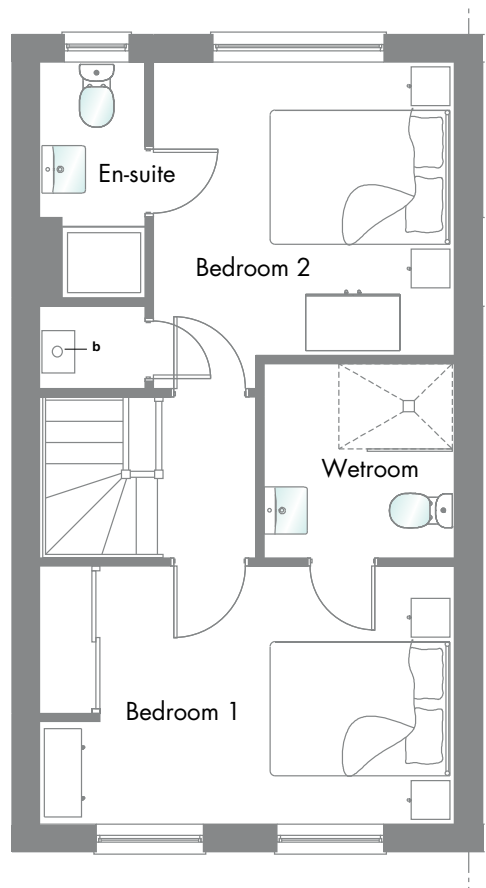
With two en-suite double bedrooms upstairs, and double sliding patio doors down stairs, the innovative Abode 77 feels incredibly spacious for its size.



## GROUND FLOOR



## FIRST FLOOR



# G

Lounge	15'11" x 10'4"	4.85 x 3.14 m*
Kitchen/ Dining	12'6" x 9'7"	3.80 x 2.92 m*
Cloaks	5'7" x 3'7"	1.70 x 1.10 m

# F

Bedroom 1	14'3" x 8'11"	4.34 x 2.71 m*
Wetroom	6'9" x 6'6"	2.06 x 1.99 m
Bedroom 2	10'4" x 10'1"	3.16 x 3.08 m*
En-suite	8'1" x 3'7"	2.47 x 1.09 m

Hob **ov** Oven **ff** Fridge/Freezer **wm** Washing Machine Space  
**dw** Dishwasher space **b** Boiler  
 \*Max dimensions Note: Bedroom dimensions taken into wardrobe recess  
 Wardrobes are an upgrade item

Customers should note this illustration is an example of The Abode 77 house type. All dimensions indicated are approximate and the furniture layout is for illustrative purposes only. Homes may be 'handed' (mirror image) versions of the illustrations, and may be detached, semi-detached or terraced. Materials used may differ from plot to plot including render and roof tile colours. Detailed plans and specifications are available for inspection for each plot at our Sales Hub during working hours and customers must check their individual specifications prior to making a reservation. Please see Sales Consultant for further details.