

Visit: redrow.co.uk



ABODE 90
2 BEDROOM HOME

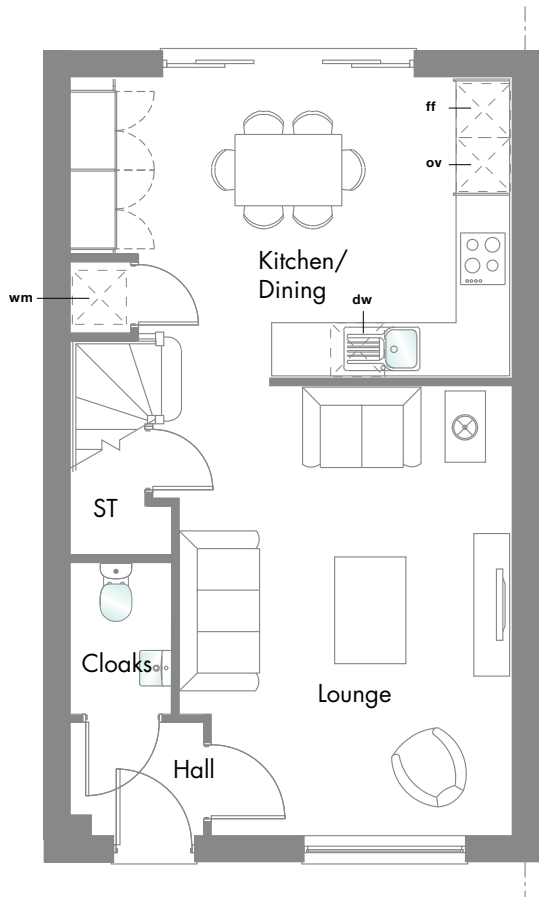
2 BEDROOM HOME

908 SQFT

Why waste space on a box room you'll never use? The Abode 90 spreads out to create two generous en suite doubles instead, making the most of the space where you really need it.



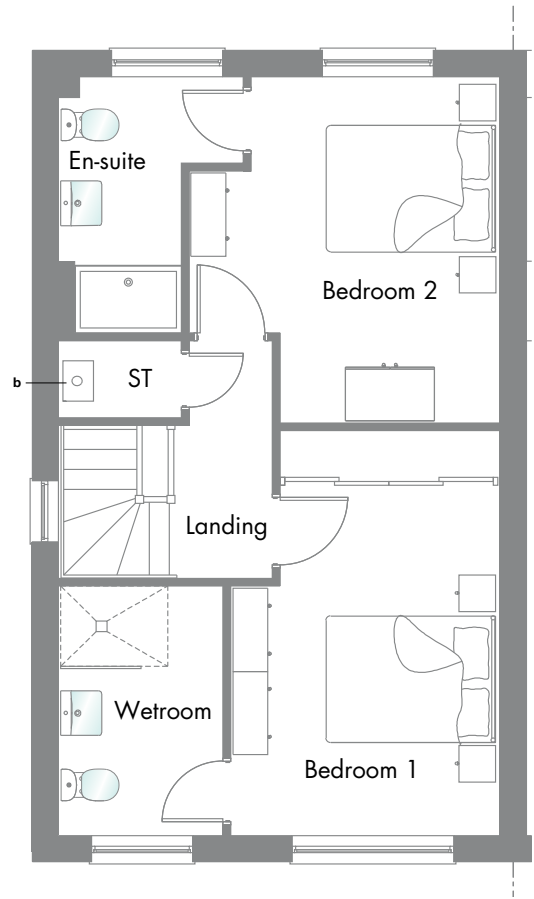
GROUND FLOOR



G

Lounge	16'6" x 12'2"	5.02 x 3.70 m*
Kitchen/ Dining	14'5" x 10'4"	4.40 x 3.16 m*
Cloaks	5'7" x 3'8"	1.70 x 1.11 m
Laundry	2'9" x 2'2"	0.84 x 0.65 m

FIRST FLOOR



F

Bedroom 1	12'10" x 9'10"	3.90 x 2.99 m*
Wetroom	9'1" x 6'0"	2.78 x 1.82 m
Bedroom 2	12'8" x 11'4"	3.86 x 3.46 m*
En-suite	6'9" x 6'9"	2.05 x 2.05 m*

Hob **ov** Oven **ff** Fridge/Freezer **wm/td** Washing Machine/Tumble Dryer space **dw** Dishwasher space **b** Boiler
*Max dimensions Note: Bedroom dimensions taken into wardrobe recess Wardrobes are an upgrade item

Customers should note this illustration is an example of The Abode 90 house type. All dimensions indicated are approximate and the furniture layout is for illustrative purposes only. Homes may be 'handed' (mirror image) versions of the illustrations, and may be detached, semi-detached or terraced. Materials used may differ from plot to plot including render and roof tile colours. Detailed plans and specifications are available for inspection for each plot at our Sales Hub during working hours and customers must check their individual specifications prior to making a reservation. Please see Sales Consultant for further details.