

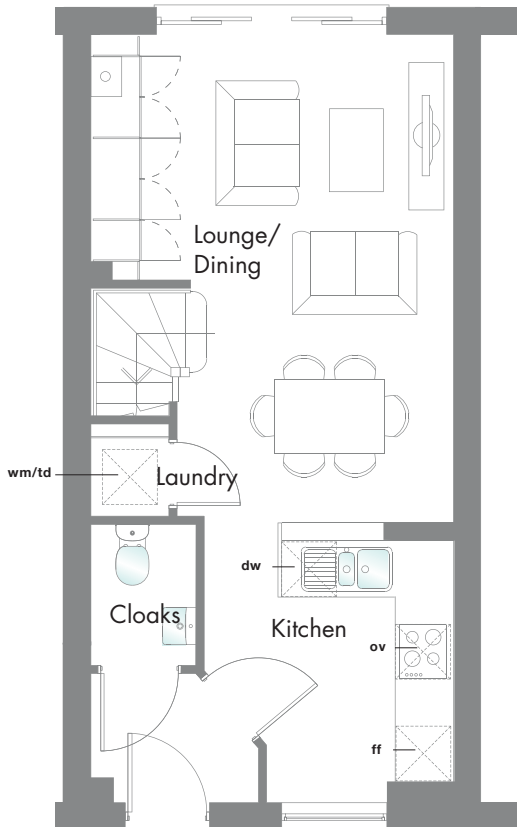
2 BEDROOM HOME

699 SQFT

We've reinvented the traditional two-up two-down brick terraced home to create so much more space for you to live and to grow.



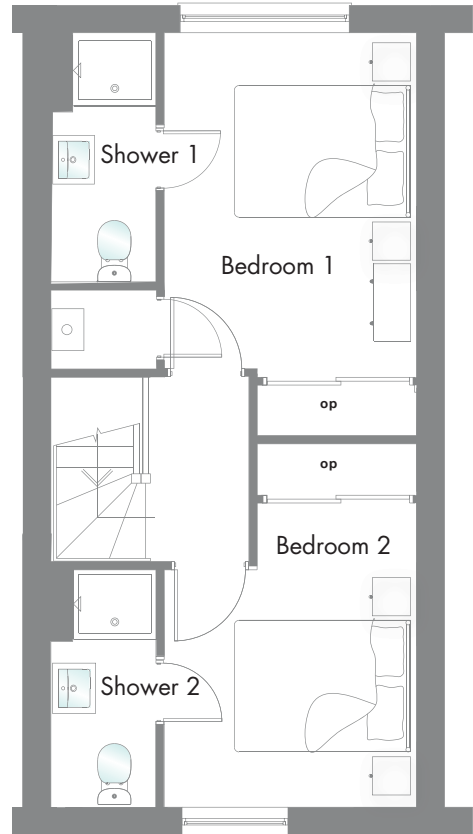
GROUND FLOOR



G

Lounge/ Dining	16'8" x 12'9"	5.09 x 3.87 m*
Kitchen	10'4" x 8'9"	3.14 x 2.67 m*
Cloaks	5'0" x 3'8"	1.52 x 1.11 m
Laundry	2'10" x 2'8"	0.85 x 0.80 m

FIRST FLOOR



F

Bedroom 1	14'1" x 8'10"	4.29 x 2.68 m*
Shower 1	8'8" x 3'7"	2.63 x 1.10 m*
Bedroom 2	12'8" x 8'10"	3.86 x 2.68 m*
Shower 2	8'4" x 3'7"	2.55 x 1.10 m*

Customers should note this illustration is an example of The Abode 70 house type. All dimensions indicated are approximate and the furniture layout is for illustrative purposes only. Homes may be 'handed' (mirror image) versions of the illustrations, and may be detached, semi-detached or terraced. Materials used may differ from plot to plot including render and roof tile colours. Detailed plans and specifications are available for inspection for each plot at our Marketing Suite during working hours and customers must check their individual specifications prior to making a reservation. ** All wardrobes are subject to site specification. Please see Sales Consultant for further details. Please note images shown are not accurate representations of house type.

Hob **ov** Oven **ff** Fridge/Freezer **wm/td** Washing Machine/ Tumble dryer space **dw** Dishwasher space **op** Optional Wardrobe**
*Max dimensions Note: Bedroom dimensions taken into wardrobe recess.
Slate roof to plots 11 + 22 only.

Redrow.co.uk give notice that the property particulars and related information on this site, whilst believed to be accurate, are set as a general outline for guidance only. Intending purchasers should not rely on them as statements or representations of fact, but must satisfy themselves before physical inspection as to their availability, or by physical inspection of the property in question or otherwise as to their accuracy or fit for purpose. Consequently, no information displayed on this site (or linked sites) constitutes or forms part of a contract. Materials used may differ from plot to plot including render and roof tile colours.