



EBBSFLEET PLAZA

EBBSFLEET GREEN



HYTHE COURT
APARTMENTS

 **REDROW**
A BETTER WAY TO LIVE

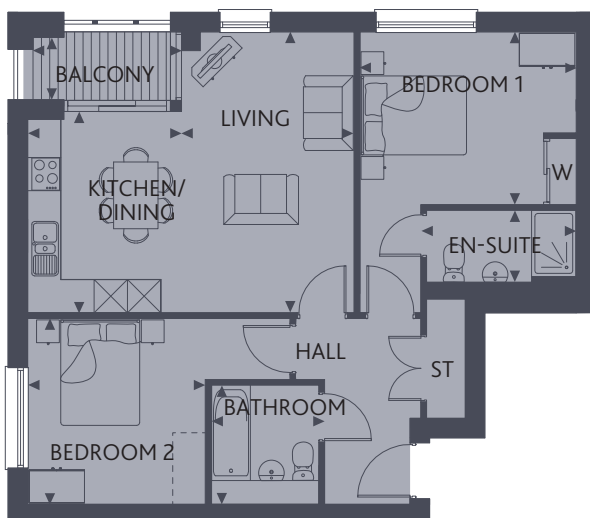
PERFECTLY Connected



Welcome to Hythe Court at Ebbsfleet Plaza, a stylish collection of 11 contemporary two bedroom apartments. Beautifully designed and finished to a high specification, these apartments are perfect for modern living. Ideally located less than a mile from Ebbsfleet International Station, travel to the City and the Continent has never been easier.

Apartment One

2 BEDROOM APARTMENT
PLOTS 199, 201, 204 & 207

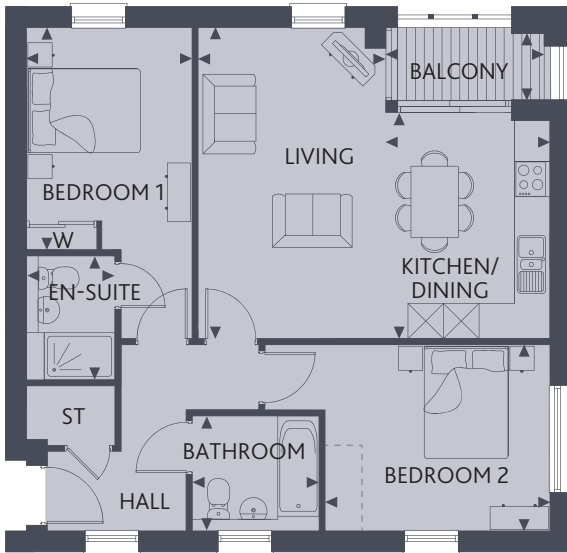


Living Room	17'4" x 10'10"	5.28 x 3.30 m
Kitchen/Dining	12'7" x 8'10"	3.84 x 2.68 m
Bedroom 1	13'1" x 10'7"	3.99 x 3.22 m
En-suite	9'5" x 4'6"	2.86 x 1.38 m
Bedroom 2	11'1" x 10'7"	3.37 x 3.23 m
Bathroom	6'11" x 6'1"	2.10 x 1.85 m
Balcony	8'3" x 4'2"	2.52 x 1.28 m

Customers should note this illustration is an example of the apartment type. All dimensions indicated are approximate and furniture layout is for illustrative purposes only. Apartments may be a 'handed' (mirror image) versions of the illustrations. Materials used may differ from plot to plot including render and roof tile colours. Detailed plans and specifications are available for inspection for each plot at our Sales Centre during working hours and customers must check their individual specifications prior to making reservation. Computer Generated Images are indicative only. Details correct at time of print, June 2017.

Apartment Two

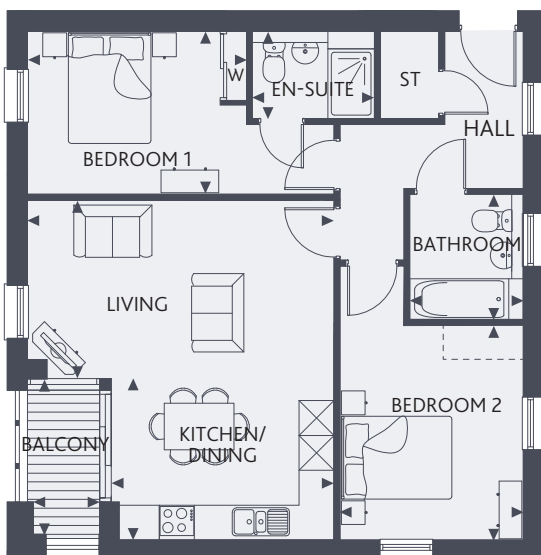
2 BEDROOM APARTMENT
PLOTS 200, 202, 205 & 208



Living Room	17'4" x 10'7"	5.28 x 3.23 m
Kitchen/Dining	12'7" x 8'10"	3.84 x 2.68 m
Bedroom 1	12'8" x 9'2"	3.87 x 2.80 m
En-suite	6'11" x 4'6"	2.11 x 1.38 m
Bedroom 2	12'8" x 10'7"	3.85 x 3.23 m
Bathroom	6'11" x 6'2"	2.10 x 1.87 m
Balcony	8'3" x 4'2"	2.52 x 1.28 m

Apartment Three

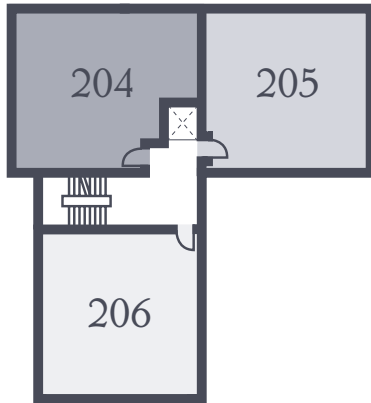
2 BEDROOM APARTMENT
PLOTS 203, 206, & 209



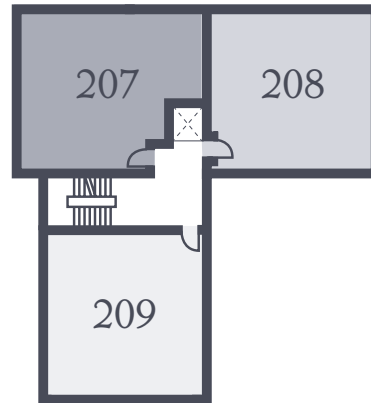
Living Room	17'4" x 10'7"	5.28 x 3.23 m
Kitchen/Dining	12'9" x 8'10"	3.89 x 2.68 m
Bedroom 1	12'8" x 9'4"	3.87 x 2.84 m
En-suite	6'11" x 4'6"	2.11 x 1.38 m
Bedroom 2	12'9" x 10'7"	3.89 x 3.23 m
Bathroom	6'11" x 6'2"	2.10 x 1.87 m
Balcony	8'3" x 4'2"	2.52 x 1.28 m

KEY Hob Cupboard W Wardrobe

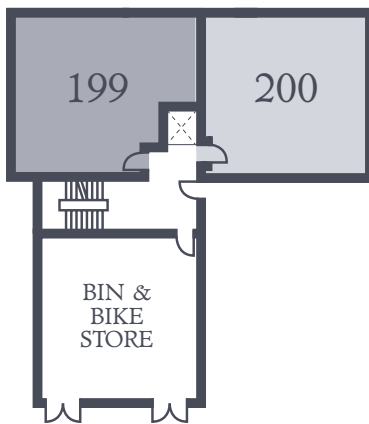
Note: Bedroom dimensions taken into wardrobe recess. All wardrobes are subject to site specification. Please see Sales Consultant for further details.



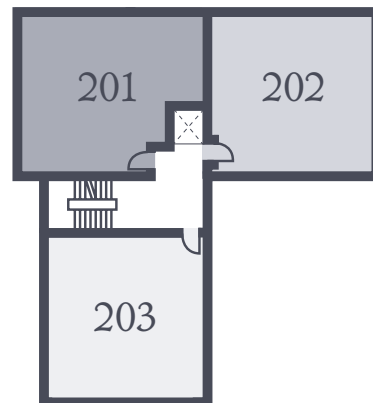
Second Floor



Third Floor



Ground Floor



First Floor

