



St Andrews Park

The Beech Apartments



 REDROW

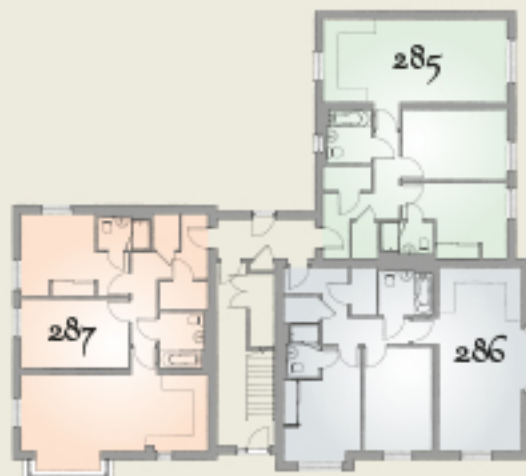
THE BEECH APARTMENTS



SECOND FLOOR



FIRST FLOOR



GROUND FLOOR

Traditional homes built the way you remember

 **REDROW**
A BETTER WAY TO LIVE

The Beech Apartments



285/288/291

Lounge/ Dining	17'2" x 11'0"	5.24m x 3.35m
Kitchen	11'0" x 6'9"	3.35m x 2.10m*
Bedroom 1	13'7" x 9'9"	4.18m x 3.01m*
En-suite	6'9" x 4'3"	2.10m x 1.30m
Bedroom 2	13'7" x 7'5"	4.18m x 2.82m*
Bathroom	6'9" x 5'9"	2.10m x 1.80m*
Laundry	4'8" x 3'6"	1.46m x 1.10m*

286

Lounge/ Dining	17'0" x 10'8"	5.18m x 3.28m
Kitchen	10'8" x 7'1"	3.28m x 2.17m*
Bedroom 1	15'3" x 10'1"	4.64m x 3.08m*
En-suite	6'9" x 4'3"	2.10m x 1.31m
Bedroom 2	13'7" x 9'0"	4.18m x 2.75m*
Bathroom	6'9" x 5'9"	2.10m x 1.80m*
Laundry	4'8" x 3'6"	1.46m x 1.10m*



287/290

Lounge/ Dining	17'9" x 10'0"	5.46m x 3.05m
Kitchen	10'0" x 6'5"	3.05m x 2.00m*
Bedroom 1	14'1" x 10'8"	4.29m x 3.29m*
En-suite	6'9" x 4'3"	2.10m x 1.50m
Bedroom 2	14'1" x 9'1"	4.29m x 2.76m*
Bathroom	6'9" x 5'10"	2.10m x 1.80m*
Laundry	4'8" x 3'6"	1.46m x 1.10m*

Key: W Wardrobe ST Cupboard * Maximum dimension
Note: Bedroom dimensions take into wardrobe recess.

Customers should note this illustration is an example of the apartment type. All dimensions indicated are approximate and furniture layout is for illustrative purposes only. Homes may be a 'banded' interior image/versions of the illustrations. Materials used may differ from plot to plot including render and roof tile colour. Detailed plans and specifications are available for inspection for each plot at our Sales Centre during working hours and customers must check their individual specifications prior to making reservation.



289

Lounge/ Dining	17'0" x 10'8"	5.18m x 3.28m
Kitchen	10'8" x 7'1"	3.28m x 2.17m*
Bedroom 1	13'7" x 10'1"	4.18m x 3.08m*
En-suite	7'0" x 4'4"	2.10m x 1.31m
Bedroom 2	13'7" x 9'0"	4.18m x 2.75m*
Bathroom	6'9" x 5'9"	2.10m x 1.80m*
Laundry	4'8" x 3'6"	1.46m x 1.10m*

292

Lounge/ Dining	17'0" x 10'8"	5.18m x 3.28m
Kitchen	10'8" x 7'1"	3.28m x 2.17m*
Bedroom 1	13'7" x 10'1"	4.18m x 3.07m*
En-suite	6'9" x 4'3"	2.10m x 1.31m
Bedroom 2	13'7" x 9'4"	4.18m x 2.86m*
Bathroom	6'9" x 5'9"	2.10m x 1.80m*
Laundry	4'8" x 3'6"	1.46m x 1.10m*



293

Lounge/ Dining	17'9" x 10'0"	5.46m x 3.05m
Kitchen	10'0" x 6'6"	3.05m x 1.99m*
Bedroom 1	14'1" x 10'10"	4.29m x 3.29m*
En-suite	6'9" x 4'3"	2.10m x 1.30m
Bedroom 2	14'1" x 9'5"	4.29m x 2.88m*
Bathroom	6'9" x 5'9"	2.10m x 1.80m*
Laundry	4'8" x 3'6"	1.46m x 1.10m*

Traditional homes built the way you remember

 **REDROW**
A BETTER WAY TO LIVE