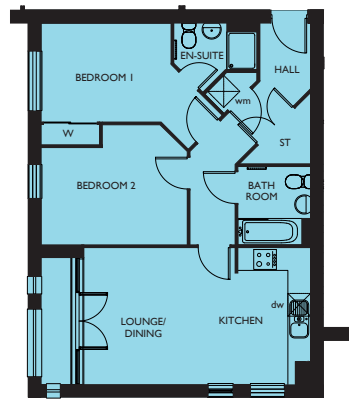
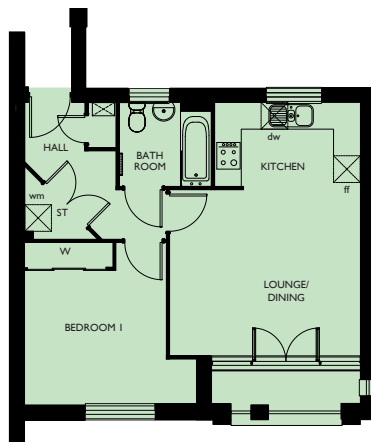


TYPE 1
PLOTS 387, 388, 389
 LOUNGE/
 DINING/
 KITCHEN 20'1" x 12'2" 6.11 x 3.71 m
 BEDROOM 1 17'5" x 11'3" 5.32 x 3.44 m*
 BEDROOM 2 13'1" x 8'9" 4.00 x 2.66 m
 BATHROOM 6'11" x 6'4" 2.11 x 1.92 m



TYPE 2
PLOTS 390, 391, 392
 LOUNGE/
 DINING/
 KITCHEN 19'8" x 11'10" 5.99 x 3.61 m
 BEDROOM 1 15'8" x 10'6" 4.78 x 3.21 m*
 BEDROOM 2 12'8" x 10'5" 3.86 x 3.17 m*
 BATHROOM 6'9" x 6'4" 2.06 x 1.92 m

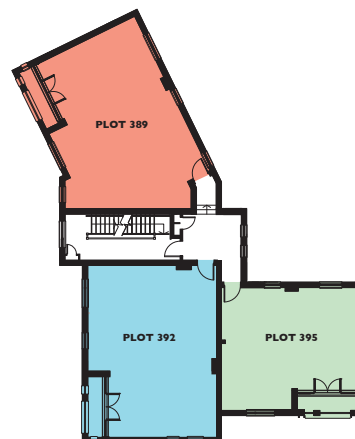
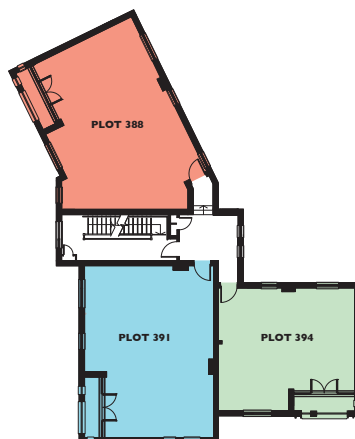
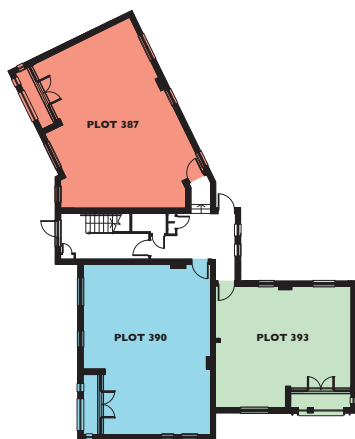


TYPE 3
PLOTS 393, 394, 395
 LOUNGE
 DINING/
 KITCHEN 18'8" x 14'1" 5.70 x 4.20 m
 BEDROOM 1 12'8" x 12'0" 3.87 x 3.65 m*
 BATHROOM 6'9" x 6'2" 2.07 x 1.89 m

GROUND FLOOR

FIRST FLOOR

SECOND FLOOR



KEY

HOB **ov** OVEN **ff** FRIDGE/FREEZER SPACE **dw** DISHWASHER SPACE **wm** WASHING MACHINE SPACE **td** TUMBLE DRYER SPACE
hw HOT WATER CYLINDER **w** OPTIONAL WARDROBE * MAXIMUM DIMENSIONS
NOTE BEDROOM DIMENSIONS TAKEN INTO WARDROBE RECESS

Customers should note this illustration is an example of the housetype. Please refer to your sales consultant for details of any elevational differences. All dimensions indicated are approximate. The specifications will vary from site to site and plot to plot. Detailed plans and specifications are available for inspection for each plot at our Marketing Suite during working hours and customers must check their individual specifications prior to making a reservation.