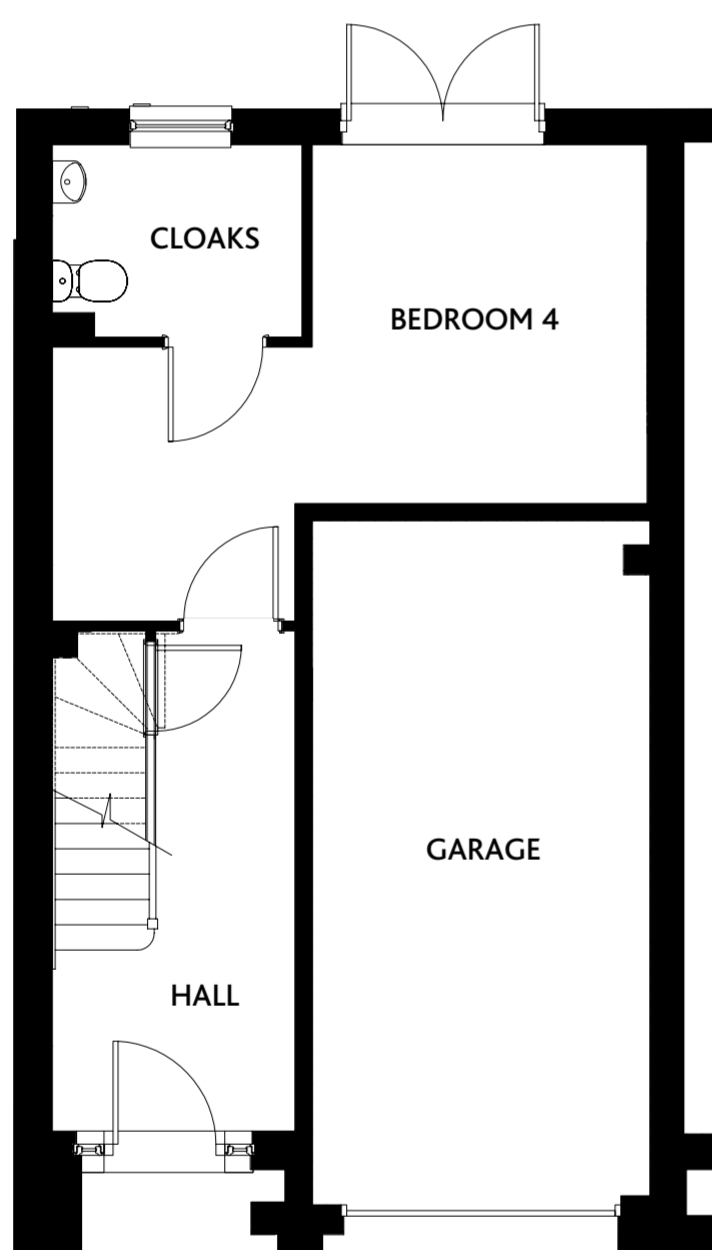
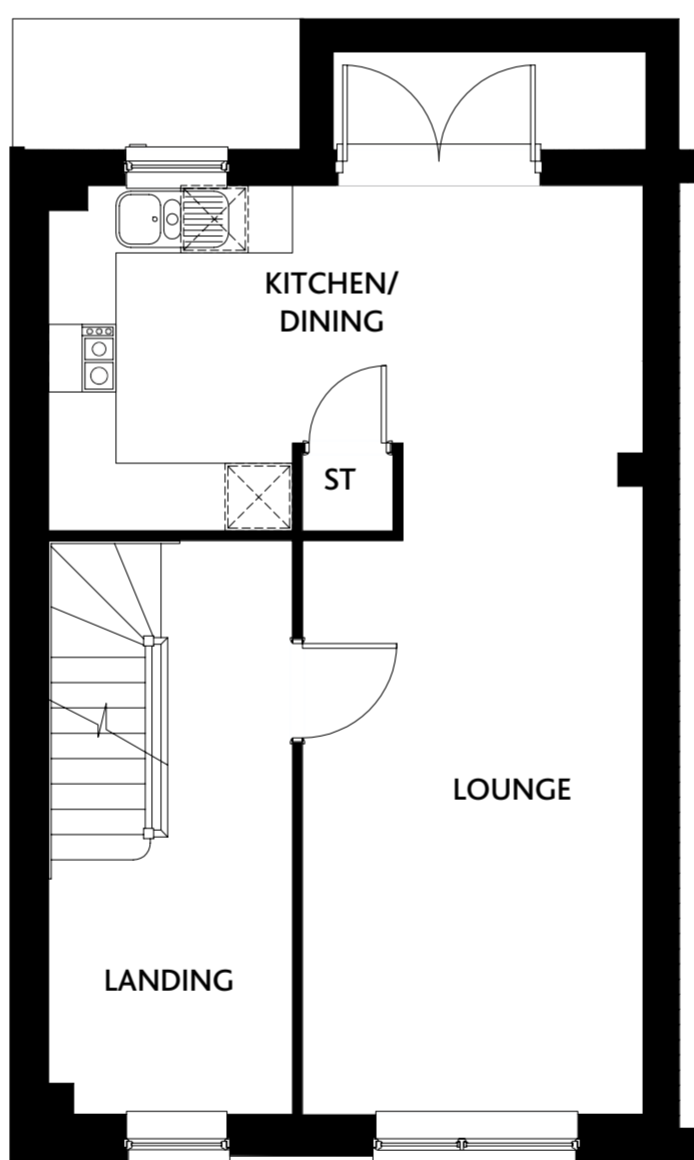


THE HAWTHORN | FOUR BEDROOM HOME WITH EN-SUITE



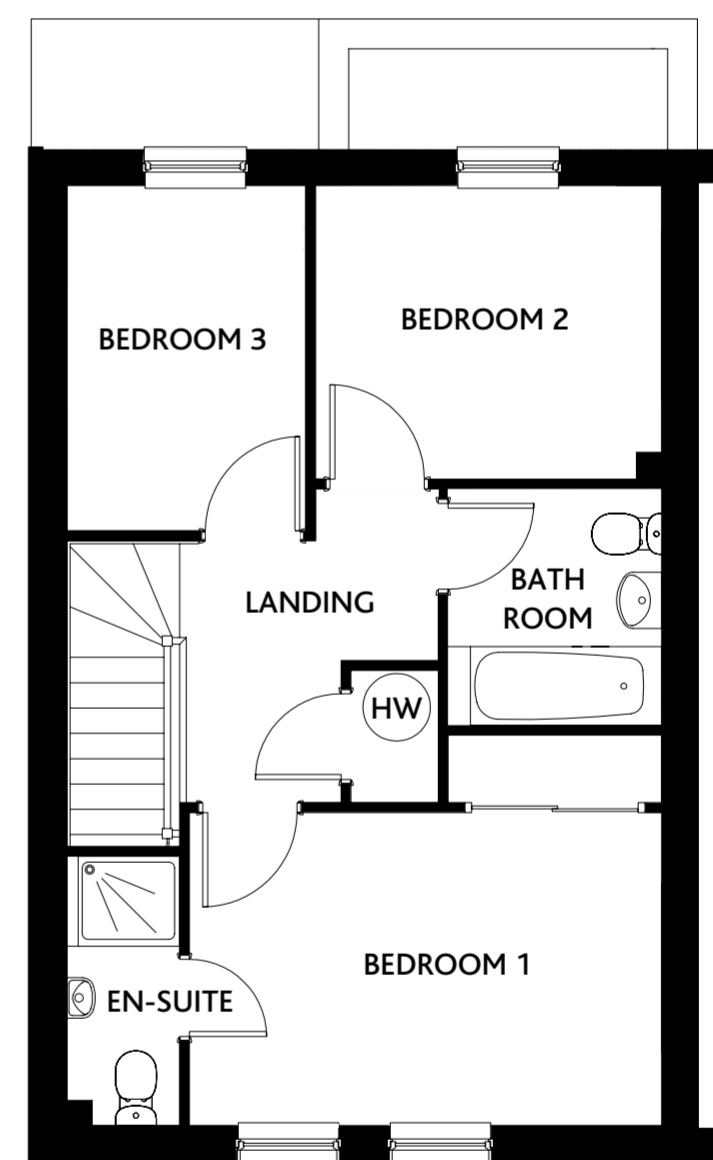
GROUND FLOOR

BEDROOM 4	17'3" x 13'10"	5.275 x 4.225 m*
CLOAKS	7'3" x 5'7"	2.225 x 1.700 m*
GARAGE	19'11" x 9'10"	6.750 x 3.000 m*



FIRST FLOOR

KITCHEN/ DINING	17'3" x 10'0"	5.275 x 3.075 m*
LOUNGE	18'3" x 9'11"	5.575 x 3.025 m



SECOND FLOOR

BEDROOM 1	13'9" x 11'4"	4.200 x 3.475 m*
EN-SUITE	7'10" x 3'3"	2.400 x 1.000 m*
BEDROOM 2	10'1" x 8'6"	3.075 x 2.600 m*
BEDROOM 3	10'0" x 6'11"	3.050 x 2.125 m
BATHROOM	6'10" x 6'2"	2.100 x 1.900 m

KEY

HOB * MAXIMUM DIMENSIONS

NOTE BEDROOM DIMENSIONS TAKEN INTO WARDROBE RECESS

Redrow.co.uk give notice that the property particulars and related information on this site, whilst believed to be accurate, are set as a general outline for guidance only. Intending purchasers should not rely on them as statements or representations of fact, but must satisfy themselves before physical inspection as to their availability, or by physical inspection of the property in question or otherwise as to their accuracy or fit for purpose. Consequently, no information displayed on this site (or linked sites) constitutes or forms part of a contract.

Customers should note this illustration is an example of the housetype. Please refer to your sales consultant for details of any elevational differences. All dimensions indicated are approximate. The specifications will vary from site to site and plot to plot. Detailed plans and specifications are available for inspection for each plot at our Marketing Suite during working hours and customers must check their individual specifications prior to making a reservation. Please note, steel frame housetypes will benefit from a slight increase to some room sizes.