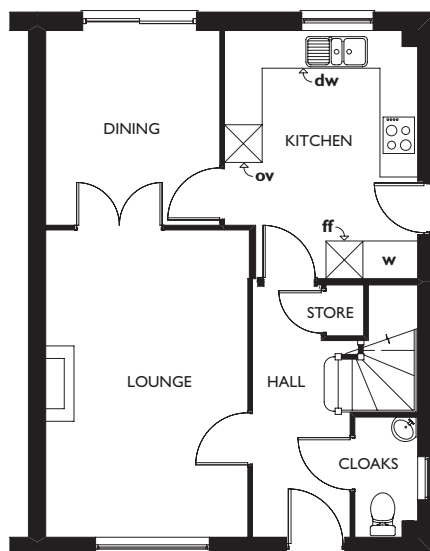
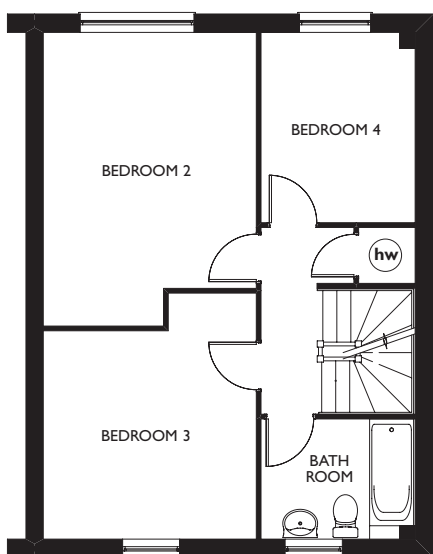


# THE RIBBLE | FOUR BEDROOM SEMI/END TERRACE\* HOME WITH EN-SUITE



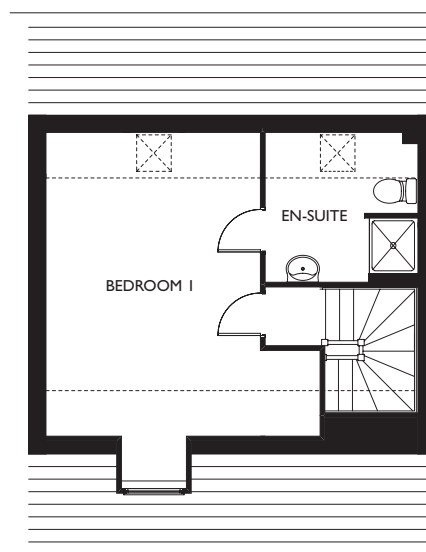
## GROUND FLOOR

LOUNGE	10'5" x 16'0"	3.183 x 4.867 m
DINING	9'0" x 10'1"	2.737 x 3.075 m
KITCHEN	10'0" x 12'10"*	3.050 x 3.889 m*
CLOAKS	6'4" x 3'10"	1.930 x 1.175 m



## FIRST FLOOR

BEDROOM 2	11'0" x 15'3"*	3.358 x 4.650 m*
BEDROOM 3	11'0" x 13'1"*	3.358 x 3.891 m*
BEDROOM 4	8'0" x 9'10"	2.429 x 3.005 m
BATHROOM	8'0" x 6'2"	2.429 x 1.888 m



## SECOND FLOOR

BEDROOM 1	14'3" x 18'2"*	4.330 x 5.538 m*
ENSUITE	7'11" x 7'10"*	2.407 x 2.375 m*

## KEY

HOB OVEN FRIDGE/FREEZER SPACE WASHING MACHINE SPACE DISHWASHER SPACE  
 HOT WATER CYLINDER \* MAXIMUM DIMENSIONS **NOTE** BEDROOM DIMENSIONS TAKEN INTO WARDROBE RECESS

Q4H133\_6 U

Customers should note this illustration is an example of the housetype. Please refer to your sales consultant for details of any elevation differences. All dimensions indicated are approximate. The specifications will vary from site to site and plot to plot. Detailed plans and specifications are available for inspection for each plot at our Marketing Suite during working hours and customers must check their individual specifications prior to making a reservation. Please note, steel frame housetypes will benefit from a slight increase to some room sizes.