

THE Windermere

FOUR BEDROOM HOME



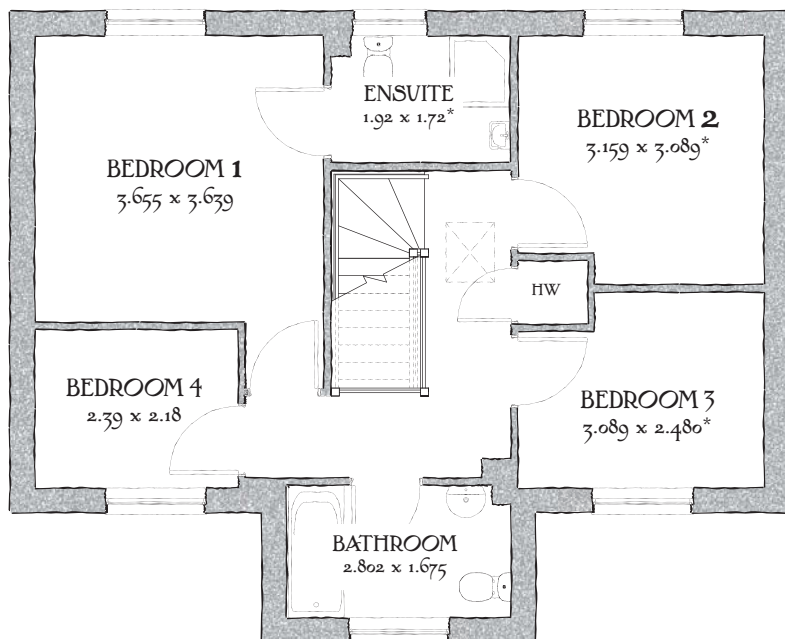
With its central portico entrance, beautiful styling and delightful detailing, The Windermere is nothing short of a design classic. You can be in no doubt that this is a home built by craftsmen who take pride in lifting quality designs off the page to create homes of authentic style and quality.

 **REDROW**
Working with
 **MANCHESTER
CITY COUNCIL**

THE Windermere

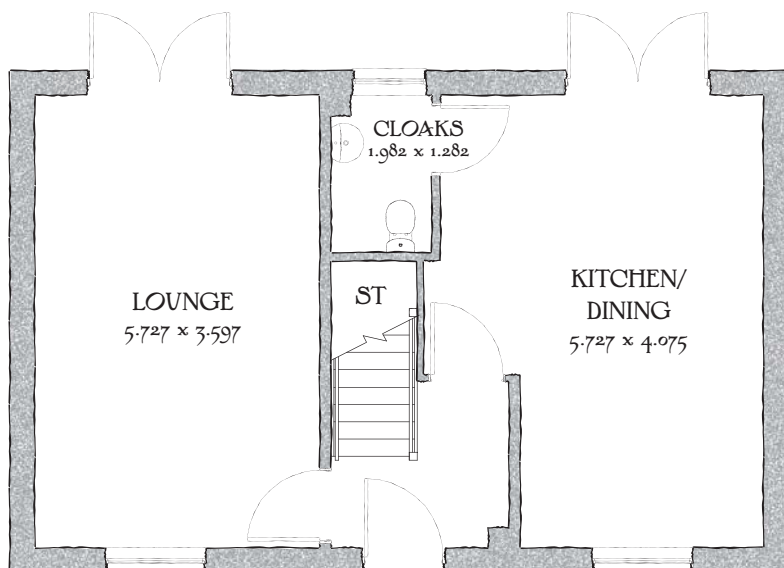
FOUR BEDROOM HOME

Reflecting the inspiration of the Arts and Crafts movement and driven by the desire to preserve individuality and craftsmanship.



FIRST FLOOR

Bedroom 1	12'0" x 11'11"	3.655 x 3.639 m
EnSuite	7'5" x 5'3"	2.268 x 1.598 m
Bedroom 2	10'4" x 10'2"	3.159 x 3.089 m*
Bedroom 3	10'2" x 8'2"	3.089 x 2.480 m*
Bedroom 4	8'5" x 6'7"	2.567 x 2.000 m
Bathroom	9'2" x 5'6"	2.802 x 1.675 m



GROUND FLOOR

Kitchen/ Dining	18'10" x 13'5"	5.727 x 4.075 m
Lounge	18'10" x 11'10"	5.727 x 3.597 m
Cloaks	6'6" x 4'3"	1.982 x 1.282 m

Customers should note this illustration is an example of The Windermere housetype. All dimensions indicated are approximate and furniture layout is for illustrative purposes only. Homes may be a 'handed' (mirror image) versions of the illustrations, and may be detached, semi-detached or terraced. Materials used may differ from plot to plot including render and roof tile colours. Detailed plans and specifications are available for inspection for each plot at our Marketing Suite during working hours and customers must check their individual specifications prior to making reservation.

USP- 15635. HANSON GARDENS GEN2

KEY

Hob *hw*

* Max dimensions Note: Bedroom dimensions taken into wardrobe recess

Traditional homes, built the way you remember

