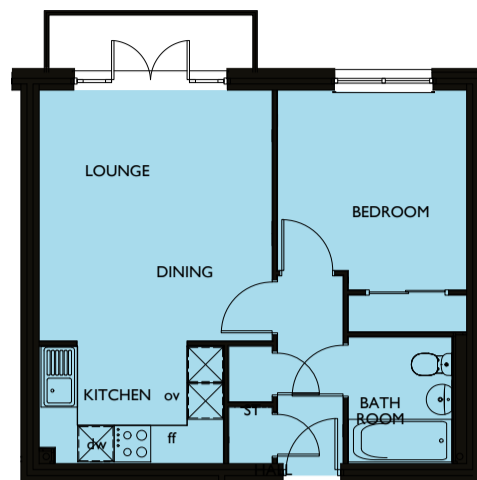


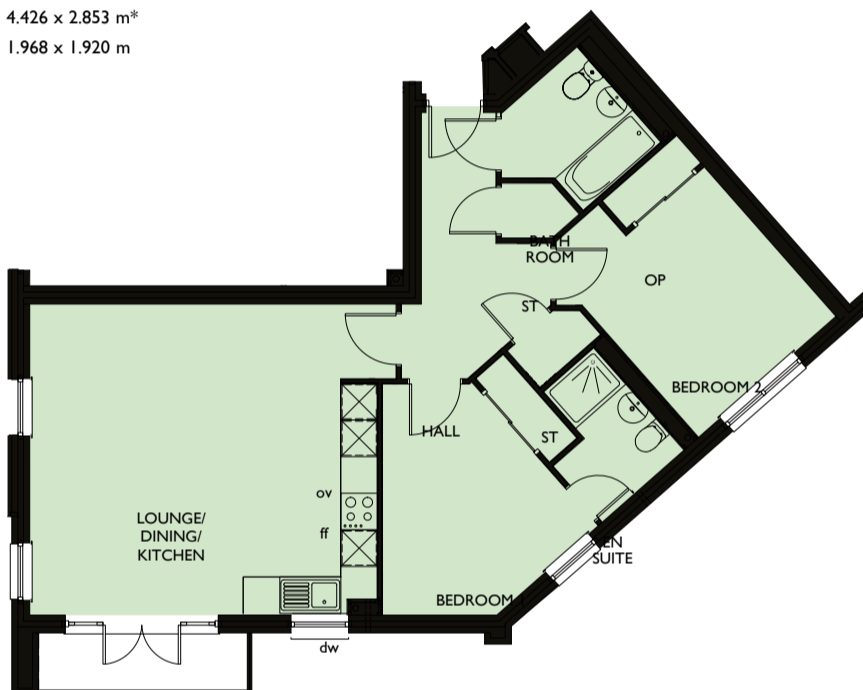
TYPE 1
PLOTS 243, 247, 248, 252, 253, 257

| | | |
|-------------------|----------------|------------------|
| LOUNGE/ DINING | 14'11" x 12'4" | 4.552 x 3.775 m |
| KITCHEN | 12'5" x 6'3" | 3.804 x 1.910 m |
| BEDROOM 1 | 11'8" x 8'10" | 3.575 x 2.704 m* |
| ENSUITE | 8'6" x 3'8" | 2.609 x 1.141 m* |
| BEDROOM 2 | 14'6" x 9'4" | 4.426 x 2.853 m* |
| BATHROOM | 6'5" x 6'3" | 1.968 x 1.920 m |



TYPE 2
PLOTS 244, 246, 249, 251, 254, 256

| | | |
|-------------------|----------------|------------------|
| LOUNGE/ DINING | 13'5" x 12'5" | 4.091 x 3.798 m |
| KITCHEN | 6'10" x 6'3" | 2.099 x 1.898 m |
| BEDROOM | 12'11" x 10'1" | 3.941 x 3.079 m* |
| BATHROOM | 6'8" x 6'3" | 2.047 x 1.916 m |



TYPE 3
PLOTS 245, 250, 255

| | | |
|-------------------------------|---------------|------------------|
| LOUNGE/ DINING/ KITCHEN | 18'7" x 16'7" | 5.678 x 5.057 m* |
| BEDROOM 1 | 13'9" x 12'3" | 4.192 x 3.757 m* |
| ENSUITE | 7'2" x 6'7" | 2.207 x 2.026 m* |
| BEDROOM 2 | 12'11" x 9'9" | 3.943 x 2.991 m* |
| BATHROOM | 6'9" x 6'1" | 2.070 x 1.855 m* |

GROUND FLOOR

FIRST FLOOR

SECOND FLOOR



KEY
 □ HOB **ov** OVEN **ff** FRIDGE/FREEZER SPACE **fr** FRIDGE SPACE **fx** FREEZER SPACE **dw** DISHWASHER SPACE **w/d** WASHER/DRYER SPACE **td** TUMBLE DRYER SPACE **hw** HOT WATER CYLINDER **op** OPTIONAL WARDROBE**
 * MAXIMUM DIMENSIONS **NOTE** BEDROOM DIMENSIONS TAKEN INTO WARDROBE RECESS

Customers should note this illustration is an example of the housetype. Please refer to your Sales Consultant for details of any elevational differences. All dimensions indicated are approximate. The specifications will vary from site to site and plot to plot. Detailed plans and specifications are available for inspection for each plot at our Marketing Suite during working hours and customers must check their individual specifications prior to making a reservation.
 ** All wardrobes are subject to site specification. Please see Sales Consultant for further details.

Redrow.co.uk give notice that the property particulars and related information on this site, whilst believed to be accurate, are set as a general outline for guidance only. Intending purchasers should not rely on them as statements or representations of fact, but must satisfy themselves before physical inspection as to their availability, or by physical inspection of the property in question or otherwise as to their accuracy or fit for purpose. Consequently, no information displayed on this site (or linked sites) constitutes or forms part of a contract. Materials used may differ from plot to plot including render and roof tile colours.